
ENGINEER'S REPORT

Corning Water District

Update to Existing Special Benefit Assessment

Prepared for:

Corning Water District

Corning, California

Prepared by:

PROVOST & PRITCHARD CONSULTING GROUP

Chico, California

May 2026



DATE SIGNED May 22, 2026

Table of Contents

Table of Contents	2
Executive Summary	5
Proposed Special Benefit Assessment and Financial Needs	5
District Special Benefit Assessment Proposition 218 Process	6
1. Legal Authority and Purpose	7
1.1 Proposition 218 Requirements	7
1.2 Purpose of the Assessment	7
2. District Background and Operational Context	9
2.1 Location	9
2.2 District Background and Purpose	9
2.3 Current Operations	9
3. District Revenue and Expense Summary	11
3.1 District Financial Objectives	11
3.2 Annual District Revenues and Expenses	11
District Revenues	11
District Expenses	12
Revenue and Expense Summary	12
Approved 2026 District Budget	15
4. Description and Determination of Special Benefit	17
4.1 Definition of Special Benefit	17
4.2 Identification of Special Benefits	17
Preservation of District's Central Valley Project Contract Surface Water Entitlements	17
Physical Diversion and Conveyance Capacity & Groundwater Recharge Reliability	17
4.3 Exclusion of General Benefits	17
4.4 Proportionality Determination	18
5. Cost Allocation and Revenue Requirements	19
5.1 Allocation of Costs	19
5.2 Dry-Year Financial Stability and Nexus	19
5.3 Multi-Year Revenue Requirement	19
6. Proposal to Increase Assessments	21
6.1 Maximum Assessment Rate Schedule	21
6.2 Assessment Calculation and Roll	21
6.3 Assessment Implementation Procedures	22
7. Engineer's Determinations	24
8. Findings of the Board of Directors	25
Appendix A – Cost Allocation Methodology Narrative and Matrix	26

Appendix B – Parcel Roll Summary and Acreage Basis..... 27

Acronyms and Abbreviations

AF	acre feet
APN	Assessor's Parcel Number
ARR	Annual Revenue Requirement
CPI	Consumer Price Index
CVP	Central Valley Project
CWD	Corning Water District
District	Corning Water District
O&M	Operations and Maintenance
Report	Proposition 218 Engineer's Report
SGMA	Sustainable Groundwater Management Act
USBR	United States Bureau of Reclamation

Executive Summary

The Corning Water District (CWD or District) seeks approval from landowners within its boundaries to implement an increase to its annual, land-based special benefit assessment (previously referred to as O&M Assessment), designed to generate sufficient revenue for ongoing District operations. This Engineer's Report (Report) has been prepared in accordance with Article XIII D of the California Constitution (Proposition 218) to support the update to Corning Water District's existing land-based special benefit assessment (Existing Assessment). The Report establishes a comprehensive financial sustainability framework to preserve long-term service reliability and land-based water supply benefit within the District.

Proposed Special Benefit Assessment and Financial Needs

The District originally established its per-acre assessment in 1967 to support fixed operational costs associated with maintaining its water conveyance system and preserving its contractual surface water supply entitlement under its contract with the United States Bureau of Reclamation (USBR) for Central Valley Project (CVP) water deliveries. The current assessment rate is \$10.41 per acre, which has remained unchanged since its establishment. Since its original adoption, inflation, infrastructure aging, regulatory requirements, and hydrologic variability have materially altered the District's financial condition. Much of the District's infrastructure network—constructed primarily in the 1960s and 1970s—is now operating beyond original design life. In critically dry years, water supply allocation reductions may approach zero, resulting in a corresponding collapse of volumetric water sales revenue, while infrastructure, staffing, insurance, regulatory compliance, and contractual obligations continue independent of delivered volume. To put the issue in perspective, CWD's current assessment revenue (approximately \$115,400 based on \$10.41 per acre) would cover only about 28% of the District's annual fixed operating costs in 2026.

The proposed assessment rate of \$38.13 per acre identified in this Report is based on the District's 2026 budget and informed by the District's historical revenues and expenses over the previous five years. The District bills landowners the assessment on the Tehama County Tax Roll. The tax roll is billed and collected based on the County's fiscal year. For years following the initial proposed increase, the assessment is proposed to be escalated using the Consumer Price Index (CPI) as published by the U.S. Bureau of Labor Statistics or a fixed annual escalation factor of 2.5%, whichever is less. The amount charged by the District in any year can be lower than the maximum rate but will not exceed that amount unless and until the District engages in another Proposition 218 proceeding. The annual assessment charged will be implemented at the discretion of the CWD Board of Directors up to the maximum rate.

The proposed assessment will help to rebalance the structure of charges to landowners by increasing the portion of District income generated by a fixed charge (the assessment). It also will better spread out the District's cash flow throughout the year. The table below details the existing assessment, the assessable acreage within the District, and the proposed assessment for Year 1.

This Report serves not merely as an assessment adjustment document, but as a comprehensive financial sustainability framework to preserve long-term service reliability, asset integrity, and the land-based water supply benefit conferred upon parcels within the District.

Key Parameter	Value
Current Assessment Rate (per acre)	\$10.41
Base Year for Assessment Update	2026
Assessable Acres (Total District)	10,933.98 acres
Year 1 Maximum Rate (per acre)	\$38.13
Escalation Methodology	Lesser of CPI-U or fixed 2.5% annual factor

Table ES-1. Key Assessment Parameters

District Special Benefit Assessment Proposition 218 Process

The process for implementing this assessment complies with requirements of Proposition 218, as outlined in Article XIII D of the California Constitution, and the Proposition 218 Omnibus Implementation Act (Government Code sections 53750 and subsequent provisions). These laws set forth the mandatory procedures that local agencies must follow in order to levy specific assessments on properties. The District's compliance with Proposition 218 satisfies legal requirements and ensures transparency by fully informing landowners and allowing them to have a direct say in the increased assessment.

AB 2257, effective January 1, 2025, added Government Code §§ 53759.1 and 53759.2. Government Code § 53759.1 authorizes the District to implement an exhaustion of administrative remedies requirement in the context of a proposed Proposition 218 assessment. If the District complies with certain specified requirements, landowners are required to submit a written objection regarding the proposed assessment by a specified deadline no less than 45 days after mailing of notice pursuant to Proposition 218 and prohibited from challenging the assessment in litigation if they did not timely submit a written objection. This process will run concurrently with the Proposition 218 timeline and does not impact a landowner's ability to submit a ballot or otherwise protest pursuant to Proposition 218.

Following the Board's acceptance of this Report, a public hearing will be held, during which all landowners affected by the proposed special benefit assessment increase may participate.

In May 2026, the District will compile the roll of the landowners subject to the District's assessment. At that time, notices and ballots will be mailed to the affected landowners, informing them of the proposed assessment increase and giving them the opportunity to support or oppose the proposed assessment as well as register written objections in accordance with the exhaustion of administrative remedies proceedings discussed above. The protest proceeding will conclude with a public hearing in July, where the ballots will be tallied. The ballots will be weighted based on the financial obligation per assessable acre, with a majority of weighted ballots in favor of the assessment required for approval.

At the conclusion of the public hearing an impartial person will tabulate the assessment ballots submitted and not withdrawn prior to the close of the public hearing. The District will be authorized, but not required, to levy the approved assessment up to the maximum rate, as specified in the Assessment Rate Schedule. A Majority Protest exists if the assessment ballots submitted, and not withdrawn, in opposition to the proposed assessment exceed the assessment ballots submitted, and not withdrawn, in its favor, weighting those assessment ballots by the amount of the proposed assessment to be imposed upon the identified parcel for which each assessment ballot was submitted.

If Majority Protest does not exist, the Board will be authorized, but not required, to levy the approved assessment up to the maximum rate, as specified in the Maximum Assessment Rate Schedule. If a Majority Protest occurs, the District will not impose the increased assessment.

1. Legal Authority and Purpose

In November 1996, California voters approved Proposition 218, the “Right to Vote on Taxes Act,” which added Article XIII D to the California Constitution. Proposition 218 establishes specific requirements for the imposition of assessments, fees, and charges by local agencies. As such, this Report has been prepared in accordance with State law to outline the equitable distribution of special benefit assessments to be levied on each parcel within the District. The District proposes to increase its land-based assessment to meet the necessary revenue stream required for covering its fixed operational costs. This assessment would take effect starting in the County’s fiscal year 2026-2027.

1.1 Proposition 218 Requirements

Under Proposition 218, CWD must identify all parcels within the District that will receive a special benefit for which the increased assessments will be levied. A “special benefit” is defined as “a particular and distinct benefit over and above general benefits conferred on real property located in the district or to the public at large.” In the case of CWD, primary special benefits provided include making a water supply available to landowners in the District as well as helping facilitate sustainable groundwater use and levels in the District, among others.

Before a local agency can levy new or increased assessments subject to Section 4 of Proposition 218, the following procedures are required:

1. Preparation of an Engineer’s Report: A detailed report must be prepared by a registered engineer certified by the State of California, justifying each assessment.
2. Notice to Property Owners: The record owner of each parcel identified for assessment must receive written notice, detailing the reason for the assessment and the total charges associated with their parcel.
3. Public Hearing Notice: The notice must specify the time, date, and location of the public hearing on the assessment and include a ballot, outlining the voting process and providing arguments for and against the assessment.
4. Public Hearing: A public hearing must be conducted no less than 45 days after mailing the notice, during which protests will be considered and ballots will be tabulated.
5. Ballot Requirement: To approve the assessment, a majority of the weighted financial obligation (based on financial obligation per assessable acre) of the returned ballots must be in favor of the assessment.

1.2 Purpose of the Assessment

The District’s financial risk has increased as surface water allocations have become more variable and as expenses have increased over time. In critically dry years, surface water allocations may approach zero percent of the District’s CVP contract supply, resulting in a corresponding reduction of volumetric water sales revenue. However, infrastructure, staffing, insurance, regulatory compliance, contractual obligations, among other expenses continue independent of the volume of water delivered to water users.

This structural mismatch between variable revenue and fixed cost obligations has created an increasing financial risk profile for the District. For instance, revenues from water sales accounted for nearly 79% of all District revenues in 2025. As such, in a year of reduced water allocation, much of the revenue generated from water sales is lost, and the District is left operating in a deficit. In 2022, for instance, the District incurred a 0% allocation and did not generate any water sales revenue. The assessment update is designed to correct this imbalance by funding those costs that preserve system readiness and protect land-based surface water entitlements irrespective of annual water delivery quantities. Despite reduced delivery volumes in some years, the District must maintain:

- Canal and pipeline infrastructure;
- Pump stations and delivery facilities;

- Regulatory compliance;
- Administrative capacity; and
- Contractual water rights standing.

These obligations exist independent of annual water delivery volume and directly inform the funding framework presented herein. As such, the District proposes to update its existing special benefit assessment on real property within the District's boundaries. The assessment constitutes a public improvement that provides special benefits to assessed parcels within the meaning of Article XIII D of the California Constitution.

The District cannot adopt the proposed assessment if a Majority Protest exists. Ultimately, an increase to the current land-based assessment from \$10.41 to \$38.13 per acre in Year 1 would fund the District's property-related services. *Approval of this Proposition 218 election would authorize maximum annual land-based assessment rates to be implemented at the discretion of the Board of Directors. The Board may elect to impose assessments at lower than the maximum in any future year without need for another Proposition 218 election.*

2. District Background and Operational Context

The District is a California Water District formed in June 1954. When the District was first formed, much of the land was irrigated with groundwater, which had led to a decline in groundwater levels. One of the early tasks for the District was to construct water distribution infrastructure and secure a surface water supply to alleviate the declining groundwater.

2.1 Location

The District has a service area boundary extending from Thomes Creek on the north, the Southern Pacific Railroad on the east, five miles west of Interstate 5, and four miles south of Corning Road. Due to water distribution problems, the portion of the District north of Thomes Creek was separated in the late 1950s into what is now known as Thomes Creek Water District. The resulting boundary change left the District with approximately 17,000 acres within its service area, of which approximately 14,000 acres were considered irrigable. However, the original 14,000 acres represented the total acreage within the District boundaries, some of which is non-obligated/non-eligible lands. As a result, by a mutual agreement between USBR and CWD, the official District acreage was changed from 14,000 acres to 11,075 acres in 1989. The District's irrigable acreage, as defined by USBR, is discussed in Section 4.4 Proportionality Determination.

2.2 District Background and Purpose

In 1963, CWD entered into a contract with USBR to construct a water distribution system to deliver up to 25,300 acre-feet (AF) annually. The system included four canal-side pumping plants and two lift stations with regulating reservoirs, as well as necessary pipelines and totalizing flow meters for delivery and measurement of water. In 1967, construction of the distribution system was completed, and water deliveries began that spring.

In 1998, CWD permanently relinquished its entitlement to 2,300 AF of its CVP water supply to USBR in exchange for payment of accumulated interest and non-interest-bearing Operation and Maintenance (O&M) Deficits through the year 1997. In 2017 and 2019, the District further relinquished 3,000 AF and 5,000 AF, respectively, of their water allocation to prepay O&M Deficits and to reduce the cost of CVP surface water supply. The 10,300 AF total supply reduction is used by USBR to increase the supply of water available to meet fish and wildlife purposes authorized by the Central Valley Project Improvement Act. The District's current contract with USBR provides for the annual delivery of up to 15,000 AF of CVP Water.

2.3 Current Operations

In recent years, many landowners have converted from flood irrigation to groundwater-supplied pressure drip, micro sprayers, or sprinkler irrigation (collectively "pressurized irrigation") requiring booster pumps and filter stations as well as transitioned largely to permanent crops. Pressurized irrigation was utilized on 6,876 acres in 2019 equating to over 90% of the total irrigated acreage at that time. The original irrigated acreage included significant lands planted with permanent crops (primarily olives), and landowners have continued to convert lands within the District from forage and annual crops to permanent crops. CWD has adapted their operations to accommodate the low-flow long-duration deliveries that are now required; however, surface water delivery has experienced a substantial decrease.

The CWD system is designed to deliver up to 25,300 AF annually in accordance with CWD's surface water right when the system was designed, and CWD has totalizing flow meters at each delivery turnout and records the volume of water delivered monthly. CWD's current annual CVP contract entitlement to 15,000 AF (due to aforementioned previous relinquishments totaling 10,300 AF) is less than 60% of the annual delivery capacity, and CWD has delivered an average of approximately 8,500 AF, or 57% of their 15,000 AF entitlement, in 2019, 2020, 2023 and 2024 (recent years with full allocation).

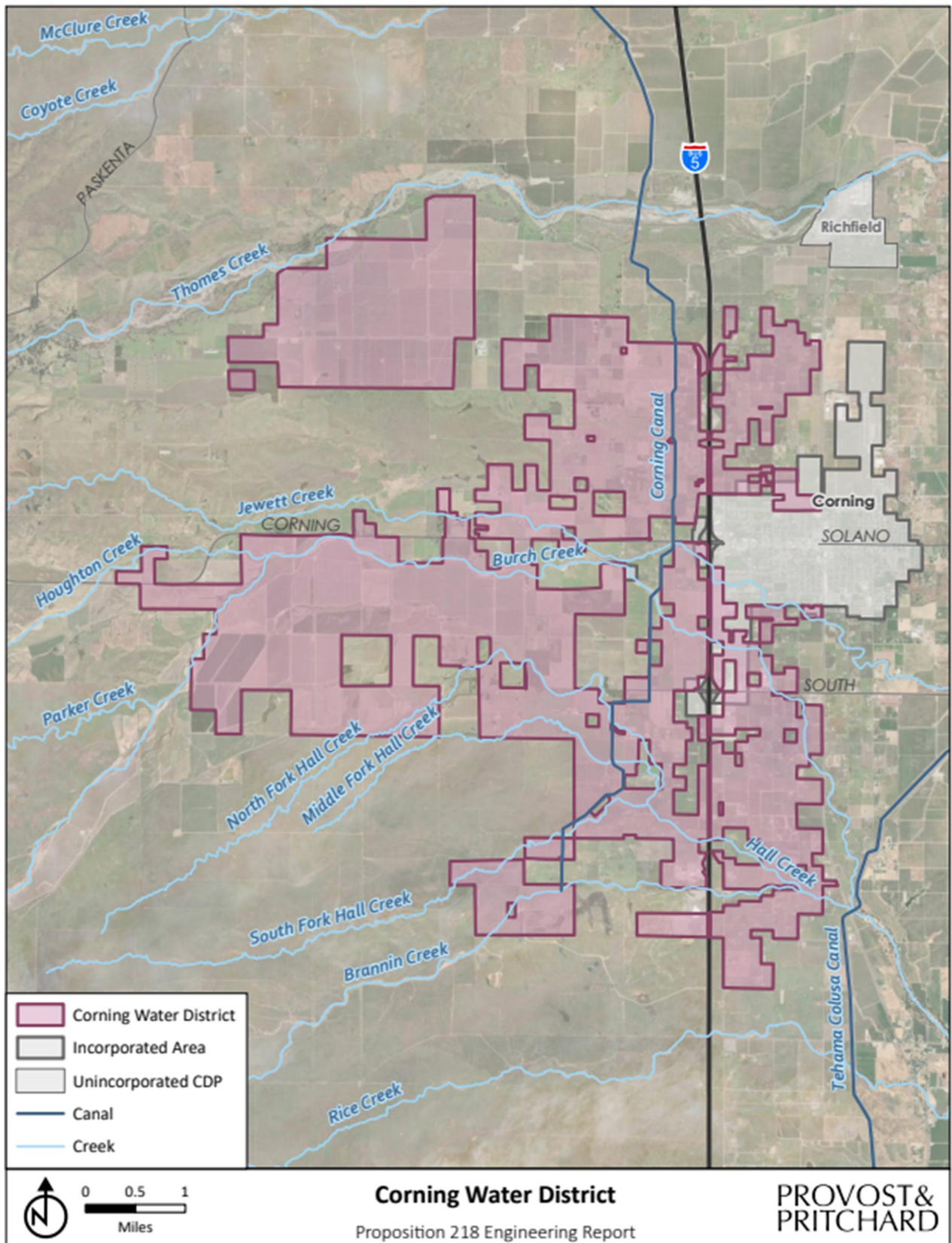


FIGURE 1. CORNING WATER DISTRICT BOUNDARY MAP

3. District Revenue and Expense Summary

This section provides an analysis of the historical revenues and expenses for the District.

3.1 District Financial Objectives

CWD exists to provide landowners and growers within the District a reliable source of surface water for irrigation, delivered efficiently and at an affordable cost. Maintaining a prudent financial position is crucial to the District achieving its objectives as further described below.

The District seeks to consistently meet the following financial objectives:

- Provide for the District’s operational costs,
- Maintain and replace the District’s infrastructure,
- Stabilize the charges paid by landowners and growers for more predictable financial planning, and
- Keep a financial position that allows the District to address emergency and unanticipated costs.

3.2 Annual District Revenues and Expenses

Below is a description of the District’s major categories of revenue and expenses. This information provides the context within which the assessment and other charges to landowners currently exist. The categories of revenue and expenses that are presented below come from the District’s annual approved budgets.

District Revenues

Table 3-1 provides a summary and description of the District’s significant revenue sources according to the District’s 2026 approved budget. The revenue breakdown below is also compared to historical revenues from 2021 through 2025 later in this section to show the District’s continued dependence on water sales year-to-year.

Revenue Source Category	Description	Annual Revenue	Approximate % of total District Revenue
Assessments	The District’s revenue collection authority is governed by the California Water Code, which provides the authority to assess property owners to obtain funding for services provided by the District. The assessment is a flat rate per deeded acre that is levied on all deeded acreage within the District.	\$115,400	≈11%
Water Sales	Landowners and growers pay water service charges to the District for the delivery of irrigation water to farmland. These charges are the largest single source of revenue for the District. Water service charges are considered a ‘property-related fee’ and as such, the authority to establish them is subject to the requirements of Article XIII D, Sec. 6 of the California Constitution.	\$855,000	≈80%
Miscellaneous Income	Other miscellaneous income includes County repayment assessment, TVI interest, Tehama County assessment, and transfer fee.	\$39,400	≈4%
Interest Income	Investment income earned from the District’s funds.	\$60,000	≈5%
2026 Estimated Total Annual Revenue		\$1.070 million	100%

Table 3-1. Description of District Revenue Sources

As shown in the table above, the District heavily depends upon its water sales to meet fixed financial obligations. As a result, dry years significantly compromise the District's ability to operate as the water service revenues are reduced significantly and current assessment of \$10.41 (a fixed revenue source) only provides approximately 11% of the District's revenue. To reverse this unsustainable trend and to begin to make progress on balancing the operating budget to pay the District's fixed operating costs, it is recommended that the District implement an assessment increase.

District Expenses

Major expenses include administrative and governance costs, field operations, payroll and other staffing-related costs, system maintenance, telemetry and utilities, and water and water delivery. The total estimated District costs in 2026 are approximately \$1.117 million, which does not include any unanticipated capital costs. As shown in Table 3-2 below, costs have risen over the years. Moreover, in future years, many expenses are projected to continue to increase. Some costs, like health insurance premiums, are anticipated to as much as triple from 2025 to 2026 as well as other dues and subscriptions continue to increase year-to-year.

Revenue and Expense Summary

The District's total revenues and expenses from 2021 through 2025 via its profit and loss statements as well as the approved budget for 2026 are displayed in Table 3-2 below. As shown in the table, the District anticipates operating in a deficit in 2026 as it did in 2022-2024.

Corning Water District Annual Profit and Loss (2021-2025) and Approved Budget (2026)

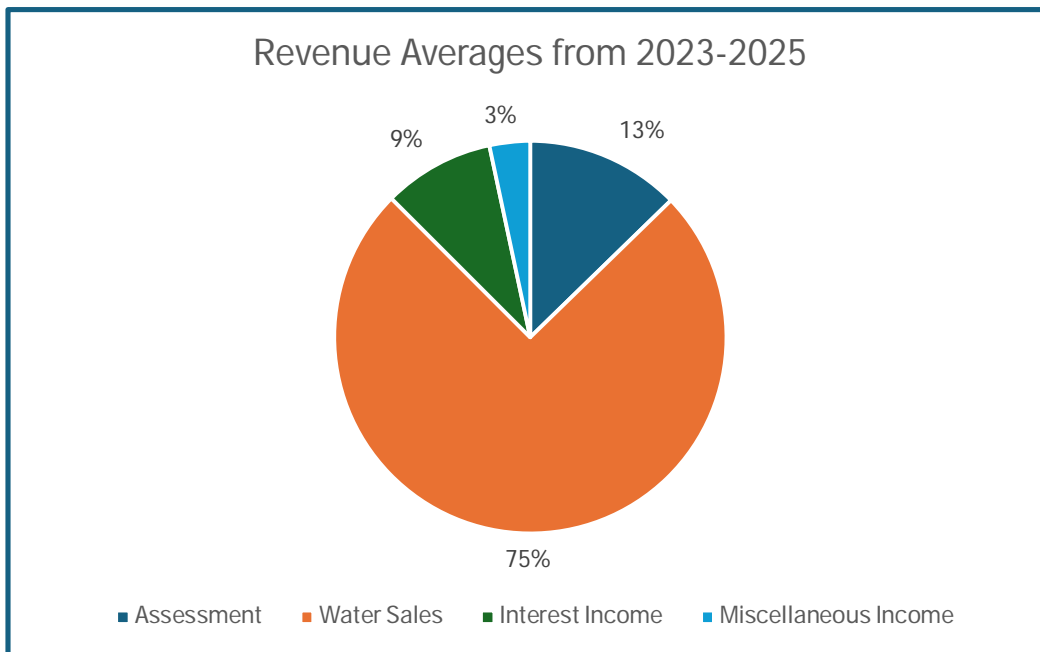
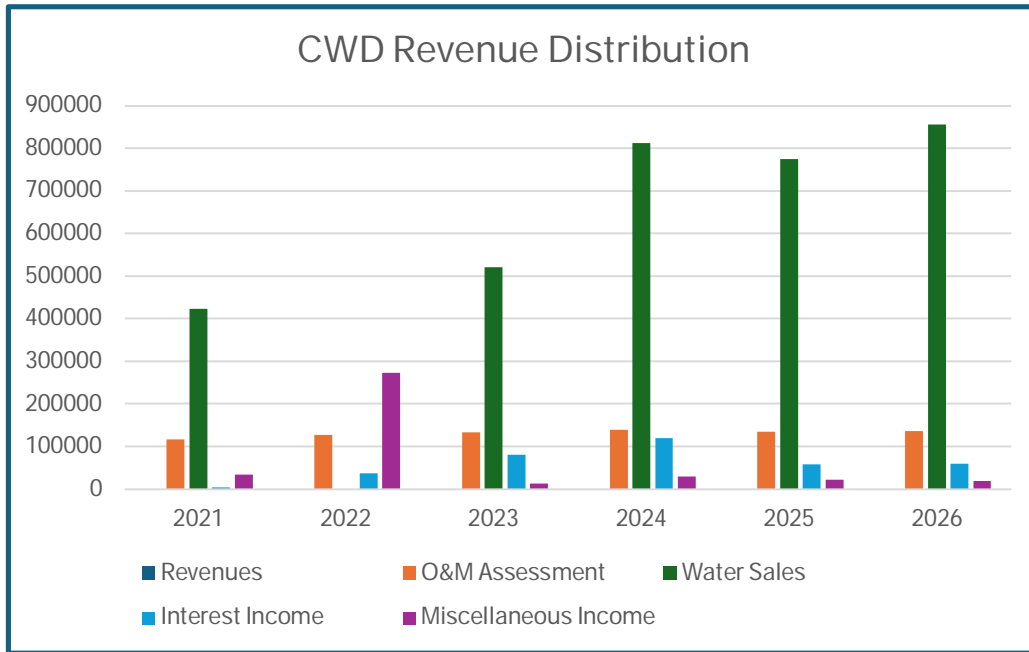
	2021	2022	2023	2024	2025	2026
Revenues						
O&M Assessment	\$ 116,293.39	\$ 119,579.68	\$ 119,579.68	\$ 120,068.52	\$ 119,716.76	\$ 115,400.00
Repayment Assessment	\$ -	\$ 7,557.25	\$ 13,394.30	\$ 18,869.51	\$ -	\$ 6,000.00
Finance Charges	\$ 806.32	\$ 33.62	\$ 402.49	\$ 593.32	\$ 13,522.58	\$ 14,000.00
Water Sales	\$ 423,414.67	\$ -	\$ 521,080.19	\$ 812,786.00	\$ 776,559.05	\$ 855,000.00
Interest Income	\$ 4,304.64	\$ 36,549.81	\$ 80,220.36	\$ 119,217.94	\$ 79,598.15	\$ 60,000.00
Transfer Fee	\$ 1,800.00	\$ 1,300.00	\$ 1,100.00	\$ 1,110.41	\$ 1,300.00	\$ 1,300.00
Miscellaneous Income	\$ 21,620.63	\$ 3,299.73	\$ 2,764.59	\$ 20,294.38	\$ 2,259.97	\$ 18,000.00
County Ad Valorem Tax	\$ 4,234.33	\$ 2,737.61	\$ 4,142.61	\$ 587.51	\$ 71.76	\$ 100.00
BOR O&M Refund	\$ -	\$ 264,889.73	\$ -	\$ -	\$ -	\$ -
Returned Check Charges	\$ (12.00)	\$ 25.00	\$ 25.00	\$ -	\$ -	\$ -
Total Income	\$ 572,461.98	\$ 435,972.43	\$ 742,709.22	\$ 1,093,527.59	\$ 993,028.27	\$ 1,069,800.00

Expenses						
Retirement	\$ 4,397.06	\$ 18,948.92	\$ 27,754.46	\$ 26,699.26	\$ 31,198.20	\$ 32,000.00
Workman's Comp	\$ 3,638.77	\$ 2,380.50	\$ 3,764.73	\$ 14,624.98	\$ 12,461.73	\$ 13,188.00
Health & Dental Insurance	\$ 38,634.83	\$ 29,546.47	\$ 18,502.57	\$ 28,274.34	\$ 56,140.35	\$ 64,005.00
Fuel & Oil	\$ 4,768.41	\$ 1,419.10	\$ 6,309.39	\$ 7,614.49	\$ 10,607.65	\$ 10,500.00
Maintenance & Repairs	\$ 12,122.06	\$ 9,444.30	\$ 31,768.54	\$ 29,237.56	\$ 30,664.08	\$ 33,270.00
Telemeter Phone & Electric	\$ 2,244.72	\$ 3,300.91	\$ 5,056.21	\$ 2,488.65	\$ 796.16	\$ 840.00
Tools & Supplies	\$ 1,653.53	\$ 22.05	\$ 3,589.68	\$ 4,324.71	\$ 6,945.18	\$ 7,000.00
Underground Service	\$ 519.39	\$ 513.91	\$ 1,514.19	\$ 1,859.18	\$ 760.93	\$ 800.00
Spray Material	\$ 511.66	\$ -	\$ 2,081.80	\$ -	\$ -	\$ -
Safety Training & Equipment	\$ 426.00	\$ 100.00	\$ 584.58	\$ 619.52	\$ 1,359.66	\$ 1,500.00
Beeper & Phones	\$ 8,325.07	\$ 5,308.88	\$ 7,611.58	\$ 7,584.01	\$ 3,909.24	\$ 4,240.00
Electric Expense	\$ 4,620.63	\$ 2,589.14	\$ 6,469.25	\$ 8,148.24	\$ 7,215.23	\$ 8,100.00
Office Equipment	\$ 1,075.46	\$ -	\$ 653.50	\$ 1,703.07	\$ 1,070.88	\$ 2,560.00
Bank Charges	\$ 216.76	\$ 47.00	\$ (6.21)	\$ 25.60	\$ 54.04	\$ 60.00
Office Supplies	\$ 1,117.21	\$ 1,368.39	\$ 2,939.92	\$ 1,967.66	\$ 3,058.45	\$ 2,000.00

Postage	\$ 1,228.00	\$ 846.00	\$ 932.00	\$ 1,214.77	\$ 1,495.00	\$ 2,000.00
Office Maintenance	\$ 9,962.24	\$ 10,269.47	\$ 1,834.75	\$ 2,648.36	\$ 2,294.23	\$ 2,300.00
Transcript Expense	\$ 1,928.27	\$ -	\$ -	\$ -	\$ -	\$ -
Insurance, Liability, & Prop	\$ 12,114.86	\$ 13,763.18	\$ 8,257.44	\$ 18,805.67	\$ 20,858.36	\$ 20,858.00
Tax Collection Fee	\$ 986.46	\$ 994.48	\$ 990.76	\$ 1,100.28	\$ 1,184.00	\$ 1,100.00
Travel & Convention	\$ -	\$ -	\$ 164.57	\$ 759.62	\$ -	\$ -
Audit	\$ 7,500.00	\$ 7,900.00	\$ 8,500.00	\$ 8,900.00	\$ 9,600.00	\$ 10,000.00
Computer/Support	\$ 5,181.99	\$ 3,683.95	\$ 4,023.85	\$ 10,455.31	\$ 9,084.06	\$ 9,000.00
Legal & Professional	\$ 5,389.52	\$ 2,240.00	\$ 13,669.51	\$ 3,682.50	\$ 11,566.00	\$ 12,000.00
Directors Perdiem	\$ 2,803.29	\$ 2,582.78	\$ 2,644.50	\$ 3,033.51	\$ 2,397.30	\$ 2,500.00
Election Expense	\$ -	\$ 217.28	\$ -	\$ -	\$ -	\$ -
Dues & Membership	\$ 5,170.00	\$ 6,210.00	\$ 13,958.51	\$ 6,150.00	\$ 6,150.00	\$ 6,150.00
Contract Negotiation - Legal	\$ 12,841.94	\$ 2,276.12	\$ 1,604.85	\$ 367.34	\$ 807.52	\$ 807.00
TCCA Expenses - Other	\$ 2,254.84	\$ 2,742.63	\$ 2,063.96	\$ 91.54	\$ -	\$ -
Miscellaneous	\$ 303.50	\$ 106.93	\$ 140.00	\$ 2,044.19	\$ 887.71	\$ 500.00
State Water Right Permit	\$ 16,719.97	\$ 16,789.93	\$ 16,789.93	\$ 14,389.24	\$ 26,202.32	\$ 24,000.00
Ag Water Purchase	\$ 163,057.72	\$ 7,882.69	\$ 347,174.30	\$ 480,054.01	\$ 369,901.90	\$ 500,500.00
TCCA Conveyance	\$ 89,320.71	\$ 91,669.32	\$ 83,560.08	\$ 93,517.08	\$ 91,895.87	\$ 115,257.00
Trinity PUD-Bureau	\$ -	\$ -	\$ 116.40	\$ -	\$ -	\$ -
Depreciation	\$ 9,318.48	\$ 114,041.76	\$ 120,401.18	\$ 124,701.32	\$ -	\$ -
Payroll	\$ 119,145.92	\$ 84,039.22	\$ 163,144.80	\$ 196,511.74	\$ 215,660.36	\$ 229,680.00
Bank Service Charges	\$ 77.36	\$ 12.00	\$ 12.00	\$ -	\$ 3.00	\$ -
Uncategorized Expenses	\$ -	\$ -	\$ 4,112.24	\$ -	\$ -	\$ -
Total Expenses	\$ 549,576.63	\$ 443,257.31	\$ 912,689.82	\$ 1,103,597.75	\$ 936,229.41	\$ 1,116,715.00
Total Revenues	\$ 572,461.98	\$ 435,972.43	\$ 742,709.22	\$ 1,093,527.59	\$ 993,028.27	\$ 1,069,800.00
Total Expenses	\$ 549,576.63	\$ 443,257.31	\$ 912,689.82	\$ 1,103,597.75	\$ 936,229.41	\$ 1,116,715.00
Net Income	\$ 22,885.35	\$ (7,284.88)	\$ (169,980.60)	\$ (10,070.16)	\$ 56,798.86	\$ (46,915.00)

Table 3-2. Revenue and Expense Summary 2021-2026

As previously described, revenue sources include operating revenues such as water sales and assessments, as well as non-operating revenues such as investment income. The District's average annual revenue was \$767,539.90 per year for 2021 through 2025. Charts depicting the various revenue sources for the District are provided below. Note that revenue averages relied on the past three years as 2022 did not have any water sales.



Approved 2026 District Budget

The District's total costs for 2026 are anticipated to be approximately \$1.117 million. Of that total, the District has conservatively projected its fixed operating costs to be \$416,938. Funding these costs via assessments would allow the District to continue to operate if it did not deliver any water. To put the issue in perspective, CWD's current assessment revenue (approximately \$115,400 based on \$10.41 per acre) would cover only about 28% of the District's annual fixed operating costs in 2026. The expected costs broken into cost groups for the District in 2026 are presented in Table 3-3 below, including a column showing what portion of the total expenses is tied to fixed operating costs.

Expenses	Total Expenses	Fixed Operating Costs
Payroll & Burden	\$107,935	\$107,935
System Maintenance	\$14,700	\$10,710
Field Operations	\$338,873	\$270,697
Admin & Governance	\$34,570	\$26,956
Telemetry / Utilities	\$840	\$0
Water Supply / Delivery	\$619,797	\$640
GRAND TOTAL	\$1,116,715	\$416,938

Table 3-3. Expenses from 2026 Approved Budget

4. Description and Determination of Special Benefit

Article XIII D defines "special benefit" as a particular and distinct benefit over and above general benefits conferred on the public at large. General benefits serve the broader public, such as libraries, parks, or emergency services. In contrast, special benefits confer a unique and direct benefit to specific land or buildings, which extends beyond the general benefits available to the public or those who are not subject to the assessment. The special benefit described herein is property-related and not dependent upon actual water delivery; it arises from the preservation of surface water delivery infrastructure, capacity, and contractual water supply rights appurtenant to lands within District boundaries.

This section identifies and distinguishes the special benefits conferred upon assessed parcels from any general benefits that may accrue to the public at large. Pursuant to Article XIII D, Section 4(a), only special benefits to assessed parcels may be funded through the assessment.

4.1 Definition of Special Benefit

For purposes of this Engineer's Report, a benefit is considered "special" when it:

- Is physically linked to the District's infrastructure and operations;
- Is parcel-specific or area-specific, rather than shared by the broader area outside of the District; and
- Enhances the use, utility, and productivity of the assessed property.

4.2 Identification of Special Benefits

The assessment provides the following special benefits to parcels within the District:

Preservation of District's Central Valley Project Contract Surface Water Entitlements

There is a special benefit that is conferred upon all parcels within the District's legal boundaries. This benefit includes the value of the District's ongoing activities to secure and maintain its entitlement to receive surface water supplies from the United States Bureau of Reclamation. If the District had not been organized, these surface water entitlements would not be available to lands located within the District boundaries. If the District did not exist, landowners who now receive surface water supplies might have been unable to farm in this area or would have had to rely on a diminishing groundwater resource. This benefit also includes the value of the District's distribution system, infrastructure, and the ability of the District to deliver surface water. This benefit is directly tied to the assessed land and does not accrue to parcels outside the District.

Physical Diversion and Conveyance Capacity & Groundwater Recharge Reliability

Without the District's surface supplies lands within District boundaries would be obligated to rely exclusively on groundwater. Groundwater pumping is now strictly regulated by the State of California through the Sustainable Groundwater Management Act (SGMA). Pursuant to SGMA, the State is authorized to impose limitations on groundwater extractions in areas where groundwater pumping produces conditions of overdraft. CWD's continued delivery of surface water to District boundaries limits conditions of overdraft within District boundaries by recharging groundwater supplies through operation of its surface water conveyance and distribution system. Groundwater recharge that occurs within the District's service area consists of seepage from canals as well as in-lieu recharge through the application of surface water supplies as irrigation to farmed lands within the District. Distributed recharge through the availability and application of surface water benefits groundwater conditions for parcels located within the District and also reduces dependency on groundwater. In summary, all parcels within District boundaries would be negatively impacted if the groundwater resources in the area become unsustainable are not sustainable due in part to the lack of an organized District and its operation and maintenance of a robust surface water conveyance and distribution system.

4.3 Exclusion of General Benefits

The preservation of water conveyance infrastructure, protection of contractual water rights, and maintenance of sustainable groundwater conditions within District boundaries accrue directly and exclusively to parcels within the District's boundaries. Any incidental general benefit to the public at large is de minimis, incidental, and not separately quantifiable. No portion of the assessment is levied to fund general benefits to the public at large.

4.4 Proportionality Determination

Section 4(a) of Article XIII D of the California Constitution mandates that assessments not “exceed the reasonable cost of the proportional special benefit conferred on that parcel.” This Report has determined that all irrigable acres within the District receive specific and direct benefits that do not extend to the general public or to those not assessed. The District’s USBR Contract labels “irrigable acres” as those with the appropriate land classification of “Irrigable Land or Irrigation Service Area”, which, according to the USBR Land Classification Guide (“Technical Guidelines for Irrigation Suitability Land Classification”), is defined as: “arable land under a specific Reclamation project plan for which a water supply is or can be made available and is provided with or planned to be provided with irrigation, drainage, flood protection, and other features as necessary for sustained irrigation. The irrigable lands are determined from the arable lands by considering potential economic benefits, limitations imposed by water supply, irrigation return flow water quality, cost of facilities and service to specific tracts, rights-of-way, and other nonproductive purposes.”

All acreage classified as ‘irrigable’ within the District equally benefit from the availability of a reliable surface water supply and accompanying groundwater benefits. There is no variation in the special benefit conferred on each irrigable acre within the District. Therefore, all irrigable acres are equally benefitted by the District’s actions, justifying the uniform assessment rate. The District provides equal opportunity to all landowners with USBR-identified irrigable acres to elect to receive available surface water supplies for agricultural use – regardless of water year type, parcel location, type of crop proposed to be irrigated, or means of water delivery. Without the water supplies, facilities, and operations of the District, it is likely that the benefitted parcels and the irrigable acreage therein would be less viable for commercial-scale agriculture and agricultural operations would be constrained by unsustainable groundwater conditions, and significantly increased costs. Therefore, it has been determined by this Report that there is no varying special benefit among assessed acreage within the District.

5. Cost Allocation and Revenue Requirements

The cost allocation methodology is based on how District expenses function in practice. Each expenditure category was evaluated to determine whether the expenditure is primarily fixed to operate, maintain, and repair District infrastructure and maintenance of the District’s surface water supply entitlement, or whether the expenditure varies directly with annual water delivery.

5.1 Allocation of Costs

Expenditures are allocated between Assessment-Funded (Special Benefit) and Rate-Funded (Water Delivery). Costs are allocable to special benefit when they preserve infrastructure readiness, exist in dry and critically dry years, protect asset value, maintain contractual water entitlements, and sustain groundwater recharge benefits and are otherwise fixed operating costs. Expenditures that vary directly with water delivery volume—primarily Agricultural Water Purchase Expense and TCCA Conveyance Expense—remain rate-funded. The allocation of costs is shown in the table below based on the District’s 2026 budget.

Cost Group	Total Budget	Fixed (Assessment)	Variable (Rate-Funded)
Payroll & Burden	\$107,935	\$107,935	\$0
System Maintenance	\$14,700	\$10,710	\$3,990
Field Operations	\$338,873	\$270,697	\$68,176
Admin & Governance	\$34,570	\$26,956	\$7,614
Telemetry / Utilities	\$840	\$0	\$840
Water Supply / Delivery	\$619,797	\$640	\$619,157
GRAND TOTAL	\$1,116,715	\$416,938	\$699,777

Table 5-1. 2026 Budget Expenditure Allocation by Cost Group

5.2 Dry-Year Financial Stability and Nexus

In zero-allocation years, the District must continue employing personnel, maintaining canals and pipelines, servicing pump stations, carrying insurance, and meeting regulatory obligations. These expenditures are necessary to prevent deterioration of physical infrastructure and forfeiture of water supply rights. The dry-year cost persistence analysis confirms that much of the District’s expenditures remain materially unchanged in dry and critically dry years, confirming that these costs are preservation-based and not commodity-based.

5.3 Multi-Year Revenue Requirement

Operations and Maintenance expenditures are ongoing and necessary to preserve infrastructure readiness regardless of hydrologic conditions. These include staffing, regulatory compliance, routine system repair, insurance, and administrative functions. Because these costs exist independent of annual water delivery volume, they are perpetual in nature and directly support the preservation-based special benefit.

Annual Revenue Requirements (ARR), equal to the fixed portion of the Operations and Maintenance expenditures, are escalated using the CPI for All Urban Consumers (CPI-U, U.S. City Average, All Items) as published by the U.S. Bureau of Labor Statistics, or a fixed annual escalation factor of 2.5%, whichever is less. The Board of Directors retains discretion to levy less than the authorized maximum in any fiscal year. The multi-year revenue schedule in the table below reflects the ARR based on the fixed O&M costs for 2026 and the following five years escalated annually by 2.5%.

FISCAL YEAR	Annual O&M Costs (\$)
2026	\$416,938
2027	\$427,361
2028	\$438,045
2029	\$448,997
2030	\$460,222
2031	\$471,727

Table 5-2. Multi-Year Revenue Requirement (Selected Years)

6. Proposal to Increase Assessments

Due to increasing costs and past budget shortfalls, the CWD's Board of Directors has determined the best course of action to stabilize and sustain District finances is to raise the assessment rate to provide more reliable annual revenues to reduce reliance on variable and unreliable revenues presently generated by service charges for water deliveries within the District. This is particularly important given the forecast for more dry years in the future and the State of California's continued emphasis on water conservation.

Therefore, the District intends to increase the amount of its per-acre benefit assessment. This section lays out the District's proposed plans for addressing the necessary assessment increase associated with this effort. It should be noted that if the proposed new assessment is approved, the existing \$10.41 assessment structure will be eliminated and only the new assessment collected. However, *if the proposed assessment is not approved, the existing assessment charge will remain in place.*

6.1 Maximum Assessment Rate Schedule

The Maximum Assessment Rate Schedule establishes the upper boundary of authorized annual rates. Actual annual assessments may be set below the authorized maximum based on Board discretion and prevailing fiscal conditions. The table below provides the total revenue requirement, assessable acres within the District, and resulting Maximum Assessment Rate Schedule for the first five years; however, the inflationary maximum assessment rate increases would occur in perpetuity, unless a subsequent Proposition 218 election is passed. Note that the assessment rate increases by an inflation factor of the lesser of CPI and 2.5% per year to meet the anticipated inflationary cost increases. As such, the Assessment Rate is calculated by taking the District's Annual O&M (fixed) Costs divided by the District's Assessable Acres to equal a per acre assessment rate. Each year, the District will identify the less of CPI and 2.5% to calculate the annual inflationary increase; however, the table below relies on the 2.5% for the purpose of illustration.

Tax Year	Annual O&M Costs	Assessable Acres	Assessment Rate (per acre)
2026-2027	\$416,938	10,933.98	\$38.13
2027-2028	\$427,361	10,933.98	\$39.09
2028-2029	\$438,045	10,933.98	\$40.06
2029-2030	\$448,997	10,933.98	\$41.06
2030-2031	\$460,222	10,933.98	\$42.09

Table 6-1. Maximum Assessment Rate Schedule – First Five Years

The assessment is established to fund ongoing operations costs. The assessment shall remain in effect in perpetuity unless repealed, reduced, or modified by the Board in accordance with applicable provisions of the California Constitution and statutory law. Annual levies may be set at or below maximum authorized rates based on adopted budgets and actual District costs.

6.2 Assessment Calculation and Roll

The Parcel Assessment Roll is included as Appendix B and identifies each assessed parcel by Assessor's Parcel Number (APN), acreage, and calculated maximum assessment amount. The Assessment Roll in Appendix B shows the acreage determination for each parcel. The assessment levied on each parcel is calculated as follows:

$\text{Parcel Assessment} = \text{Parcel Irrigable Acres} \times \text{Uniform Per-Acre Assessment Rate}$

This calculation ensures proportionality and compliance with Article XIII D. The uniform per-acre assessment rate is derived by dividing the ARR by the total assessable acreage within the District. The voting is directly related to the maximum annual assessment rate per acre multiplied by the assessable acreage of each parcel as explained in Section 4.4 and shown in Appendix B. Thus, the voting is based on the proposed assessment for each parcel as a proportionate share of the total. For passage of the Proposition 218 assessments, 50% plus one vote of the total amount of the returned ballots is required.

6.3 Assessment Implementation Procedures

It is the Engineer's opinion that the proposed assessment structure offers an equitable procedure for CWD to generate revenues for its continued operations. The District plans to initiate an election process in compliance with the applicable provisions of Article XIII D of the California Constitution, which governs the collection of land-based assessments.

The CWD Board of Directors will be asked to:

1. Approve and Accept the Engineer's Report: This Report outlines the justification and methodology behind the proposed assessment.
2. Set a Public Hearing: A hearing will be scheduled to present the proposed assessment to landowners, allowing for public input and discussion. The public hearing will occur at least 45 days after the issuance of ballots. The tabulation of ballots will occur after the close of the public hearing.
3. Authorize a Proposition 218 Mailed Ballot Election: The Board will authorize mailing notices to affected landowners, informing them of the proposed assessment and including ballots for voting on the assessment.

AB 2257, effective January 1, 2025, added Government Code §§ 53759.1 and 53759.2. Government Code § 53759.1 authorizes the District to implement an exhaustion of administrative remedies requirement in the context of a proposed Proposition 218 assessment. If the District complies with certain specified requirements, landowners are required to submit a written objection regarding the proposed assessment by a specified deadline no less than 45 days after mailing of notice pursuant to Proposition 218 and prohibited from challenging the assessment in litigation if they did not timely submit a written objection. To implement this requirement, the District is required to, among other things, prepare written responses to the timely submitted written objections and present them to the District's Board of Directors, who will make certain specified determinations prior to the close of the Proposition 218 ballot tabulation hearing. This process will run concurrently with the Proposition 218 timeline and does not impact a landowner's ability to submit a ballot or otherwise protest pursuant to Proposition 218.

Government Code § 53759.2 specifies the scope of a Court's review of the administrative record of the underlying ratemaking proceeding, if the District complied with Government Code § 53759.1 in adopting the assessment being challenged. The District intends to comply with and implement Government Code § 53759.1 with respect to the proposed assessment. Landowners will be informed of the deadlines and process to submit a written objection, and other dates related to the District's compliance with this provision.

At the public hearing, the District Board of Directors will review and consider all comments, objections, and questions raised by landowners. After considering these inputs, and closing the public hearing, the Board will tally the ballots received.

Ballots not received by the District prior to the close of the public hearing will not be counted. As Government Code 53753(c) states, "Regardless of the method of delivery, all assessment ballots shall be received at the address indicated, or the site of the public testimony, in order to be included in the tabulation of a majority protest."

For the assessment to be approved, a majority of the weighted ballots received (and not withdrawn prior to the close of the public hearing) must be in favor of the proposal. If the majority of ballots support the proposed assessment, the Board will have the authority to implement the assessment increase and set

the annual amount at its meeting on July 22, or a subsequent meeting, provided it does not exceed the Maximum Assessment Rate.

7. Engineer's Determinations

The methodology reflects accepted principles of assessment engineering, functional cost allocation, and proportional benefit analysis. The conclusions herein are supported by:

- Adopted 2026 budget documentation and five-year historical expenditure and revenue analysis (2021–2025);
- Functional cost allocation analysis and dry-year cost persistence testing;
- Acreage-based proportional apportionment;
- Tehama County Assessor, USBR, and District parcel records; and
- USBR Land Classification Records.

No portion of the Assessment is levied for general governmental purposes. Any incidental general benefit is de minimis and not funded by the Assessment.

In the Engineer's professional opinion, the proposed Assessment structure is reasonable, proportional, supported by substantial evidence contained within this Report and its Appendices, and fully compliant with Article XIII D of the California Constitution and Government Code section 53750 et seq.

Respectfully submitted,

Name: Daniel J. Kerns

Title: Engineer of Record

License No.: 84100

Date: May 22, 2026

8. Findings of the Board of Directors

Upon review of this Engineer's Report, the Board of Directors finds and determines:

- The Existing Assessment established in 1967 is insufficient to cover fixed operational costs under current conditions;
- The updated Assessment is necessary to provide a reliable source of revenue to fund and preserve infrastructure, service to customers, the District's contractual water supply entitlements, sustainable groundwater conditions, and financial stability;
- The Assessment confers special benefit upon all assessable parcels;
- The Assessment is proportional and does not exceed the reasonable cost of providing special benefit;
- The updated Assessment complies with Article XIII D and Government Code section 53750 et seq.; and
- The methodology is supported by substantial evidence and bears a rational nexus to the benefits conferred.

Appendix A – Cost Allocation Methodology Narrative and Matrix

Appendix A provides the expanded cost allocation analysis discussed in Section 5. Assessment-funded (special benefit) costs include infrastructure preservation and repair, system readiness and standby labor, regulatory compliance, insurance protecting District assets, and administrative capacity required to preserve contractual rights, among other costs. Rate-funded (water delivery) costs include commodity water purchases and conveyance charges directly tied to delivered volume.

CWD – 2026 BUDGET EXPENDITURE ALLOCATION (Assessment vs Rate)

Account	Line Item Description	Group	2026 Budget	Assessment %	Rate %	Assessment \$	Rate \$
5130	STATE UI TAX EXPENSE	Payroll & Burden	\$600.00	100%	0%	\$600	\$0
5211	SYSTEM VALVE REPAIR	System Maintenance	\$500.00	80%	20%	\$400	\$100
5140	RETIREMENT EXPENSE	Payroll & Burden	\$32,000.00	100%	0%	\$32,000	\$0
5145	WORKMAN'S COMP EXPENSE	Payroll & Burden	\$13,188.00	100%	0%	\$13,188	\$0
5150	HEALTH INSURANCE EXPENSE	Payroll & Burden	\$60,000.00	100%	0%	\$60,000	\$0
5155	DENTAL INSURANCE EXPENSE	Payroll & Burden	\$4,005.00	100%	0%	\$4,005	\$0
5200	FUEL & OIL EXPENSE	Field Ops	\$10,500.00	70%	30%	\$7,350	\$3,150
5205	VEHICLE REPAIRS EXPENSE	Field Ops	\$3,000.00	80%	20%	\$2,400	\$600
5206	BACKHOE REPAIRS EXPENSE	Field Ops	\$1,200.00	80%	20%	\$960	\$240
5210	SYSTEM REPAIRS-Program Repairs	System Maintenance	\$0.00	80%	20%	\$0	\$0
5212	PUMP STATION REPAIRS EXPENSE	System Maintenance	\$7,000.00	80%	20%	\$5,600	\$1,400
5215	GENERAL SYSTEM REPAIRS	System Maintenance	\$13,000.00	80%	20%	\$10,400	\$2,600
5220	METER REPAIR EXPENSE	Water & Delivery	\$3,000.00	0%	100%	\$0	\$3,000
5223	SCADA MAINTENANCE EXPENSE	System Maintenance	\$0.00	0%	100%	\$0	\$0
5225	SYSTEM PIPELINE REPAIR EXPENSE	System Maintenance	\$5,000.00	80%	20%	\$4,000	\$1,000
5235	TELEMETER PHONE EXPENSE	Telemetry/Utilities	\$800.00	0%	100%	\$0	\$800
5240	TELEMETER ELECTRIC EXPENSE	Telemetry/Utilities	\$40.00	0%	100%	\$0	\$40
5245	TOOLS & SUPPLIES EXPENSE	System Maintenance	\$7,000.00	70%	30%	\$4,900	\$2,100
5265	UNDERGROUND SERVICE ALERT	Water & Delivery	\$800.00	80%	20%	\$640	\$160
5271	SAFTEY TRAINING & EQUIP EXPENSE	System Maintenance	\$1,500.00	80%	20%	\$1,200	\$300
5273	EQUIPMENT REPAIRS EXPENSE	System Maintenance	\$70.00	80%	20%	\$56	\$14
5275	EQUIPMENT RENTAL EXPENSE	System Maintenance	\$500.00	80%	20%	\$400	\$100
5280	BEEPER EXPENSE	Water & Delivery	\$240.00	0%	100%	\$0	\$240
5300	OFFICE PHONE EXPENSE	Admin & Governance	\$2,000.00	100%	0%	\$2,000	\$0
5305	CELLULAR PHONE EXPENSE	Admin & Governance	\$2,000.00	100%	0%	\$2,000	\$0
5310	ELECTRIC EXPENSE-OFFICE	Admin & Governance	\$8,100.00	100%	0%	\$8,100	\$0
5312	OFFICE EQUIPMENT RENT EXPENSE	Admin & Governance	\$1,060.00	100%	0%	\$1,060	\$0
5313	OFFICE EQUIP. EXPENSE	Admin & Governance	\$1,500.00	100%	0%	\$1,500	\$0
5314	BANK CHARGES	Admin & Governance	\$60.00	100%	0%	\$60	\$0
5315	OFFICE SUPPLIES EXPENSE	Admin & Governance	\$2,000.00	100%	0%	\$2,000	\$0
5320	POSTAGE EXPENSE	Admin & Governance	\$2,000.00	100%	0%	\$2,000	\$0
5325	OFFICE MAINT EXPENSE	Admin & Governance	\$2,300.00	100%	0%	\$2,300	\$0
5335	INSURANCE, LIAB & PROP	Admin & Governance	\$20,858.00	100%	0%	\$20,858	\$0
5337	TAX COLLECTION FEE	Admin & Governance	\$1,100.00	100%	0%	\$1,100	\$0
5350	AUDIT EXPENSE	Admin & Governance	\$10,000.00	100%	0%	\$10,000	\$0
5352	COMPUTER/SUPPORT, SOFTWARE	Admin & Governance	\$9,000.00	100%	0%	\$9,000	\$0
5355	LEGAL & PROFESSIONAL EXPENSE	Admin & Governance	\$12,000.00	100%	0%	\$12,000	\$0
5360	DIRECTORS PERDIEM EXPENSE	Admin & Governance	\$2,500.00	100%	0%	\$2,500	\$0
5370	DUES & MEMBERSHIP EXPENSE	Admin & Governance	\$6,150.00	100%	0%	\$6,150	\$0
5372	CONTRACT NEGOTIATION-LEGAL	Admin & Governance	\$807.00	100%	0%	\$807	\$0
5385	MISCELLANEOUS EXPENSE	Admin & Governance	\$500.00	100%	0%	\$500	\$0
5390	STATE WATER PERMIT EXPENSE	Admin & Governance	\$24,000.00	100%	0%	\$24,000	\$0
5405	AG WATER PURCHASE EXPENSE	Water & Delivery	\$500,000.00	0%	100%	\$0	\$500,000
5407	TCCA CONVEYANCE EXPENSE	Water & Delivery	\$115,257.00	0%	100%	\$0	\$115,257

6001	PAYROLL-Administration	Payroll & Burden	\$66,560.00	65%	35%	\$43,264	\$23,296
6002	PAYROLL-Office	Payroll & Burden	\$50,000.00	65%	35%	\$32,500	\$17,500
6003	PAYROLL-Maintenance	Payroll & Burden	\$91,520.00	75%	25%	\$68,640	\$22,880
6005	STANDBY WAGES	Payroll & Burden	\$2,000.00	0%	100%	\$0	\$2,000
6006	PAGER-WK-END WAGES	Payroll & Burden	\$1,900.00	0%	100%	\$0	\$1,900
6008	CALL OUT TIME WAGE	Payroll & Burden	\$600.00	0%	100%	\$0	\$600
6010	EMPLOYER FICA EXPENSE	Payroll & Burden	\$14,000.00	100%	0%	\$14,000	\$0
6015	EMPLOYER MEDICARE EXPENSE	Payroll & Burden	\$0.00	100%	0%	\$0	\$0
6560	Payroll Expenses	Payroll & Burden	\$2,500.00	100%	0%	\$2,500	\$0
5406	PURCHASED M&I Water	Water & Delivery	\$500.00	0%	100%	\$0	\$500

SUBTOTALS BY GROUP			
Group	Total Budget	Assessment \$	Rate \$
Admin & Governance	\$107,935	\$107,935	\$0
Field Ops	\$14,700	\$10,710	\$3,990
Payroll & Burden	\$338,873	\$270,697	\$68,176
System Maintenance	\$34,570	\$26,956	\$7,614
Telemetry/Utilities	\$840	\$0	\$840
Water & Delivery	\$619,797	\$640	\$619,157
GRAND TOTAL	\$1,116,715	\$416,938	\$699,777

Appendix B – Parcel Roll Summary and Acreage Basis

Appendix B contains the official parcel roll summary.

APN	Assessable Acres	Maximum Assessment Year 1	Maximum Assessment Year 2	Maximum Assessment Year 3	Maximum Assessment Year 4	Maximum Assessment Year 5
061-230-006-000	208.71	\$ 7,958.11	\$ 8,158.47	\$ 8,360.92	\$ 8,569.63	\$ 8,784.60
061-230-007-000	230	\$ 8,769.90	\$ 8,990.70	\$ 9,213.80	\$ 9,443.80	\$ 9,680.70
061-230-010-000	79.25	\$ 3,021.80	\$ 3,097.88	\$ 3,174.76	\$ 3,254.01	\$ 3,335.63
061-230-016-000	39.4	\$ 1,502.32	\$ 1,540.15	\$ 1,578.36	\$ 1,617.76	\$ 1,658.35
061-230-020-000	103.93	\$ 3,962.85	\$ 4,062.62	\$ 4,163.44	\$ 4,267.37	\$ 4,374.41
061-230-022-000	42.09	\$ 1,604.89	\$ 1,645.30	\$ 1,686.13	\$ 1,728.22	\$ 1,771.57
061-230-023-000	65	\$ 2,478.45	\$ 2,540.85	\$ 2,603.90	\$ 2,668.90	\$ 2,735.85
061-230-024-000	158	\$ 6,024.54	\$ 6,176.22	\$ 6,329.48	\$ 6,487.48	\$ 6,650.22
061-230-025-000	37.6	\$ 1,433.69	\$ 1,469.78	\$ 1,506.26	\$ 1,543.86	\$ 1,582.58
061-230-026-000	39.5	\$ 1,506.14	\$ 1,544.06	\$ 1,582.37	\$ 1,621.87	\$ 1,662.56
061-230-027-000	50.57	\$ 1,928.23	\$ 1,976.78	\$ 2,025.83	\$ 2,076.40	\$ 2,128.49
061-240-012-000	9.63	\$ 367.19	\$ 376.44	\$ 385.78	\$ 395.41	\$ 405.33
061-250-001-000	234.4	\$ 8,937.67	\$ 9,162.70	\$ 9,390.06	\$ 9,624.46	\$ 9,865.90
061-260-008-000	18.63	\$ 710.36	\$ 728.25	\$ 746.32	\$ 764.95	\$ 784.14
061-290-004-000	60.77	\$ 2,317.16	\$ 2,375.50	\$ 2,434.45	\$ 2,495.22	\$ 2,557.81
061-290-005-000	79.08	\$ 3,015.32	\$ 3,091.24	\$ 3,167.94	\$ 3,247.02	\$ 3,328.48
061-300-008-000	6.64	\$ 253.18	\$ 259.56	\$ 266.00	\$ 272.64	\$ 279.48
061-300-009-000	10.85	\$ 413.71	\$ 424.13	\$ 434.65	\$ 445.50	\$ 456.68
061-300-010-000	8.49	\$ 323.72	\$ 331.87	\$ 340.11	\$ 348.60	\$ 357.34
061-300-016-000	65.2	\$ 2,486.08	\$ 2,548.67	\$ 2,611.91	\$ 2,677.11	\$ 2,744.27
061-300-017-000	9.87	\$ 376.34	\$ 385.82	\$ 395.39	\$ 405.26	\$ 415.43
061-300-018-000	29.85	\$ 1,138.18	\$ 1,166.84	\$ 1,195.79	\$ 1,225.64	\$ 1,256.39
061-300-019-000	8.95	\$ 341.26	\$ 349.86	\$ 358.54	\$ 367.49	\$ 376.71
061-310-013-000	11.76	\$ 448.41	\$ 459.70	\$ 471.11	\$ 482.87	\$ 494.98
061-310-034-000	10	\$ 381.30	\$ 390.90	\$ 400.60	\$ 410.60	\$ 420.90
061-310-053-000	225.31	\$ 8,591.07	\$ 8,807.37	\$ 9,025.92	\$ 9,251.23	\$ 9,483.30
061-310-054-000	349.92	\$ 13,342.45	\$ 13,678.37	\$ 14,017.80	\$ 14,367.72	\$ 14,728.13
061-320-005-000	8	\$ 305.04	\$ 312.72	\$ 320.48	\$ 328.48	\$ 336.72
061-320-009-000	49.28	\$ 1,879.05	\$ 1,926.36	\$ 1,974.16	\$ 2,023.44	\$ 2,074.20
061-320-010-000	8	\$ 305.04	\$ 312.72	\$ 320.48	\$ 328.48	\$ 336.72
061-340-002-000	40	\$ 1,525.20	\$ 1,563.60	\$ 1,602.40	\$ 1,642.40	\$ 1,683.60
061-340-003-000	61	\$ 2,325.93	\$ 2,384.49	\$ 2,443.66	\$ 2,504.66	\$ 2,567.49
061-340-008-000	210.55	\$ 8,028.27	\$ 8,230.40	\$ 8,434.63	\$ 8,645.18	\$ 8,862.05
061-340-015-000	77.9	\$ 2,970.33	\$ 3,045.11	\$ 3,120.67	\$ 3,198.57	\$ 3,278.81
061-340-016-000	140	\$ 5,338.20	\$ 5,472.60	\$ 5,608.40	\$ 5,748.40	\$ 5,892.60
061-340-020-000	64.23	\$ 2,449.09	\$ 2,510.75	\$ 2,573.05	\$ 2,637.28	\$ 2,703.44
061-340-021-000	18.42	\$ 702.35	\$ 720.04	\$ 737.91	\$ 756.33	\$ 775.30
061-350-001-000	213	\$ 8,121.69	\$ 8,326.17	\$ 8,532.78	\$ 8,745.78	\$ 8,965.17
067-070-007-000	47.36	\$ 1,805.84	\$ 1,851.30	\$ 1,897.24	\$ 1,944.60	\$ 1,993.38
067-070-008-000	35.42	\$ 1,350.56	\$ 1,384.57	\$ 1,418.93	\$ 1,454.35	\$ 1,490.83
067-070-009-000	24.49	\$ 933.80	\$ 957.31	\$ 981.07	\$ 1,005.56	\$ 1,030.78
069-010-016-000	37	\$ 1,410.81	\$ 1,446.33	\$ 1,482.22	\$ 1,519.22	\$ 1,557.33
069-010-017-000	39.39	\$ 1,501.94	\$ 1,539.76	\$ 1,577.96	\$ 1,617.35	\$ 1,657.93

069-010-030-000	8.89	\$	338.98	\$	347.51	\$	356.13	\$	365.02	\$	374.18
069-010-031-000	8.89	\$	338.98	\$	347.51	\$	356.13	\$	365.02	\$	374.18
069-010-032-000	68.64	\$	2,617.24	\$	2,683.14	\$	2,749.72	\$	2,818.36	\$	2,889.06
069-010-033-000	68.65	\$	2,617.62	\$	2,683.53	\$	2,750.12	\$	2,818.77	\$	2,889.48
069-010-034-000	76.53	\$	2,918.09	\$	2,991.56	\$	3,065.79	\$	3,142.32	\$	3,221.15
069-010-035-000	9.43	\$	359.57	\$	368.62	\$	377.77	\$	387.20	\$	396.91
069-010-036-000	9.43	\$	359.57	\$	368.62	\$	377.77	\$	387.20	\$	396.91
069-010-037-000	50	\$	1,906.50	\$	1,954.50	\$	2,003.00	\$	2,053.00	\$	2,104.50
069-040-001-000	9.26	\$	353.08	\$	361.97	\$	370.96	\$	380.22	\$	389.75
069-040-004-000	20.85	\$	795.01	\$	815.03	\$	835.25	\$	856.10	\$	877.58
069-040-009-000	2.81	\$	107.15	\$	109.84	\$	112.57	\$	115.38	\$	118.27
069-040-011-000	9.7	\$	369.86	\$	379.17	\$	388.58	\$	398.28	\$	408.27
069-040-024-000	5.22	\$	199.04	\$	204.05	\$	209.11	\$	214.33	\$	219.71
069-040-047-000	14.3	\$	545.26	\$	558.99	\$	572.86	\$	587.16	\$	601.89
069-040-048-000	16.9	\$	644.40	\$	660.62	\$	677.01	\$	693.91	\$	711.32
069-040-051-000	3.2	\$	122.02	\$	125.09	\$	128.19	\$	131.39	\$	134.69
069-050-003-000	83	\$	3,164.79	\$	3,244.47	\$	3,324.98	\$	3,407.98	\$	3,493.47
069-050-006-000	70	\$	2,669.10	\$	2,736.30	\$	2,804.20	\$	2,874.20	\$	2,946.30
069-060-001-000	9.53	\$	363.38	\$	372.53	\$	381.77	\$	391.30	\$	401.12
069-060-003-000	19.39	\$	739.34	\$	757.96	\$	776.76	\$	796.15	\$	816.13
069-060-004-000	5	\$	190.65	\$	195.45	\$	200.30	\$	205.30	\$	210.45
069-060-008-000	9.62	\$	366.81	\$	376.05	\$	385.38	\$	395.00	\$	404.91
069-060-009-000	10	\$	381.30	\$	390.90	\$	400.60	\$	410.60	\$	420.90
069-060-010-000	5	\$	190.65	\$	195.45	\$	200.30	\$	205.30	\$	210.45
069-060-015-000	28.4	\$	1,082.89	\$	1,110.16	\$	1,137.70	\$	1,166.10	\$	1,195.36
069-060-018-000	2.5	\$	95.33	\$	97.73	\$	100.15	\$	102.65	\$	105.23
069-060-022-000	38	\$	1,448.94	\$	1,485.42	\$	1,522.28	\$	1,560.28	\$	1,599.42
069-060-024-000	20	\$	762.60	\$	781.80	\$	801.20	\$	821.20	\$	841.80
069-060-025-000	48.22	\$	1,838.63	\$	1,884.92	\$	1,931.69	\$	1,979.91	\$	2,029.58
069-060-026-000	9.62	\$	366.81	\$	376.05	\$	385.38	\$	395.00	\$	404.91
069-060-027-000	10	\$	381.30	\$	390.90	\$	400.60	\$	410.60	\$	420.90
069-060-028-000	10	\$	381.30	\$	390.90	\$	400.60	\$	410.60	\$	420.90
069-060-029-000	9.6	\$	366.05	\$	375.26	\$	384.58	\$	394.18	\$	404.06
069-060-030-000	9.6	\$	366.05	\$	375.26	\$	384.58	\$	394.18	\$	404.06
069-060-031-000	2.83	\$	107.91	\$	110.62	\$	113.37	\$	116.20	\$	119.11
069-060-032-000	9.67	\$	368.72	\$	378.00	\$	387.38	\$	397.05	\$	407.01
069-060-034-000	7.34	\$	279.87	\$	286.92	\$	294.04	\$	301.38	\$	308.94
069-060-037-000	3.51	\$	133.84	\$	137.21	\$	140.61	\$	144.12	\$	147.74
069-060-039-000	10	\$	381.30	\$	390.90	\$	400.60	\$	410.60	\$	420.90
069-060-040-000	10	\$	381.30	\$	390.90	\$	400.60	\$	410.60	\$	420.90
069-070-002-000	18.97	\$	723.33	\$	741.54	\$	759.94	\$	778.91	\$	798.45
069-070-007-000	4.41	\$	168.15	\$	172.39	\$	176.66	\$	181.07	\$	185.62
069-070-010-000	15.55	\$	592.92	\$	607.85	\$	622.93	\$	638.48	\$	654.50
069-070-016-000	1.85	\$	70.54	\$	72.32	\$	74.11	\$	75.96	\$	77.87
069-070-023-000	18.43	\$	702.74	\$	720.43	\$	738.31	\$	756.74	\$	775.72

069-070-024-000	0.86	\$	32.79	\$	33.62	\$	34.45	\$	35.31	\$	36.20
069-070-028-000	1.97	\$	75.12	\$	77.01	\$	78.92	\$	80.89	\$	82.92
069-070-029-000	2.16	\$	82.36	\$	84.43	\$	86.53	\$	88.69	\$	90.91
069-070-031-000	1.95	\$	74.35	\$	76.23	\$	78.12	\$	80.07	\$	82.08
069-070-044-000	4.25	\$	162.05	\$	166.13	\$	170.26	\$	174.51	\$	178.88
069-070-046-000	9.96	\$	379.77	\$	389.34	\$	399.00	\$	408.96	\$	419.22
069-070-047-000	17.62	\$	671.85	\$	688.77	\$	705.86	\$	723.48	\$	741.63
069-070-048-000	8.67	\$	330.59	\$	338.91	\$	347.32	\$	355.99	\$	364.92
069-070-049-000	4.98	\$	189.89	\$	194.67	\$	199.50	\$	204.48	\$	209.61
069-070-050-000	5.03	\$	191.79	\$	196.62	\$	201.50	\$	206.53	\$	211.71
069-070-051-000	4.64	\$	176.92	\$	181.38	\$	185.88	\$	190.52	\$	195.30
069-070-052-000	2.52	\$	96.09	\$	98.51	\$	100.95	\$	103.47	\$	106.07
069-070-053-000	2.35	\$	89.61	\$	91.86	\$	94.14	\$	96.49	\$	98.91
069-070-054-000	2.4	\$	91.51	\$	93.82	\$	96.14	\$	98.54	\$	101.02
069-070-055-000	2.4	\$	91.51	\$	93.82	\$	96.14	\$	98.54	\$	101.02
069-070-056-000	2.4	\$	91.51	\$	93.82	\$	96.14	\$	98.54	\$	101.02
069-070-058-000	20	\$	762.60	\$	781.80	\$	801.20	\$	821.20	\$	841.80
069-070-059-000	37.91	\$	1,445.51	\$	1,481.90	\$	1,518.67	\$	1,556.58	\$	1,595.63
069-070-060-000	58.09	\$	2,214.97	\$	2,270.74	\$	2,327.09	\$	2,385.18	\$	2,445.01
069-080-006-000	9.7	\$	369.86	\$	379.17	\$	388.58	\$	398.28	\$	408.27
069-080-009-000	19.36	\$	738.20	\$	756.78	\$	775.56	\$	794.92	\$	814.86
069-080-011-000	12	\$	457.56	\$	469.08	\$	480.72	\$	492.72	\$	505.08
069-080-013-000	9.5	\$	362.24	\$	371.36	\$	380.57	\$	390.07	\$	399.86
069-080-014-000	10	\$	381.30	\$	390.90	\$	400.60	\$	410.60	\$	420.90
069-080-016-000	9.4	\$	358.42	\$	367.45	\$	376.56	\$	385.96	\$	395.65
069-080-019-000	9	\$	343.17	\$	351.81	\$	360.54	\$	369.54	\$	378.81
069-080-020-000	9	\$	343.17	\$	351.81	\$	360.54	\$	369.54	\$	378.81
069-080-026-000	7.2	\$	274.54	\$	281.45	\$	288.43	\$	295.63	\$	303.05
069-080-032-000	23.56	\$	898.34	\$	920.96	\$	943.81	\$	967.37	\$	991.64
069-080-039-000	3.3	\$	125.83	\$	129.00	\$	132.20	\$	135.50	\$	138.90
069-080-043-000	2.38	\$	90.75	\$	93.03	\$	95.34	\$	97.72	\$	100.17
069-080-044-000	2.38	\$	90.75	\$	93.03	\$	95.34	\$	97.72	\$	100.17
069-080-045-000	2.38	\$	90.75	\$	93.03	\$	95.34	\$	97.72	\$	100.17
069-080-046-000	2.48	\$	94.56	\$	96.94	\$	99.35	\$	101.83	\$	104.38
069-080-055-000	8.84	\$	337.07	\$	345.56	\$	354.13	\$	362.97	\$	372.08
069-080-056-000	9.6	\$	366.05	\$	375.26	\$	384.58	\$	394.18	\$	404.06
069-080-057-000	9.67	\$	368.72	\$	378.00	\$	387.38	\$	397.05	\$	407.01
069-080-058-000	9.42	\$	359.18	\$	368.23	\$	377.37	\$	386.79	\$	396.49
069-080-059-000	4.89	\$	186.46	\$	191.15	\$	195.89	\$	200.78	\$	205.82
069-080-060-000	9.47	\$	361.09	\$	370.18	\$	379.37	\$	388.84	\$	398.59
069-080-061-000	9.46	\$	360.71	\$	369.79	\$	378.97	\$	388.43	\$	398.17
069-080-062-000	4.75	\$	181.12	\$	185.68	\$	190.29	\$	195.04	\$	199.93
069-080-063-000	9.1	\$	346.98	\$	355.72	\$	364.55	\$	373.65	\$	383.02
069-080-064-000	5	\$	190.65	\$	195.45	\$	200.30	\$	205.30	\$	210.45
069-080-065-000	4	\$	152.52	\$	156.36	\$	160.24	\$	164.24	\$	168.36

069-080-066-000	6	\$	228.78	\$	234.54	\$	240.36	\$	246.36	\$	252.54
069-080-068-000	9.62	\$	366.81	\$	376.05	\$	385.38	\$	395.00	\$	404.91
069-090-006-000	10	\$	381.30	\$	390.90	\$	400.60	\$	410.60	\$	420.90
069-090-007-000	10	\$	381.30	\$	390.90	\$	400.60	\$	410.60	\$	420.90
069-090-008-000	20	\$	762.60	\$	781.80	\$	801.20	\$	821.20	\$	841.80
069-090-009-000	20	\$	762.60	\$	781.80	\$	801.20	\$	821.20	\$	841.80
069-090-013-000	4.84	\$	184.55	\$	189.20	\$	193.89	\$	198.73	\$	203.72
069-090-014-000	4.52	\$	172.35	\$	176.69	\$	181.07	\$	185.59	\$	190.25
069-090-015-000	4.76	\$	181.50	\$	186.07	\$	190.69	\$	195.45	\$	200.35
069-090-016-000	12.56	\$	478.91	\$	490.97	\$	503.15	\$	515.71	\$	528.65
069-090-018-000	9.54	\$	363.76	\$	372.92	\$	382.17	\$	391.71	\$	401.54
069-090-024-000	9	\$	343.17	\$	351.81	\$	360.54	\$	369.54	\$	378.81
069-090-027-000	4.81	\$	183.41	\$	188.02	\$	192.69	\$	197.50	\$	202.45
069-090-028-000	4.78	\$	182.26	\$	186.85	\$	191.49	\$	196.27	\$	201.19
069-090-029-000	9.62	\$	366.81	\$	376.05	\$	385.38	\$	395.00	\$	404.91
069-090-030-000	8.97	\$	342.03	\$	350.64	\$	359.34	\$	368.31	\$	377.55
069-090-037-000	9.3	\$	354.61	\$	363.54	\$	372.56	\$	381.86	\$	391.44
069-090-038-000	9.29	\$	354.23	\$	363.15	\$	372.16	\$	381.45	\$	391.02
069-090-039-000	10	\$	381.30	\$	390.90	\$	400.60	\$	410.60	\$	420.90
069-090-040-000	8.59	\$	327.54	\$	335.78	\$	344.12	\$	352.71	\$	361.55
069-090-041-000	10	\$	381.30	\$	390.90	\$	400.60	\$	410.60	\$	420.90
069-090-042-000	10	\$	381.30	\$	390.90	\$	400.60	\$	410.60	\$	420.90
069-090-044-000	10	\$	381.30	\$	390.90	\$	400.60	\$	410.60	\$	420.90
069-090-045-000	10	\$	381.30	\$	390.90	\$	400.60	\$	410.60	\$	420.90
069-100-002-000	9.23	\$	351.94	\$	360.80	\$	369.75	\$	378.98	\$	388.49
069-100-004-000	2	\$	76.26	\$	78.18	\$	80.12	\$	82.12	\$	84.18
069-100-005-000	1	\$	38.13	\$	39.09	\$	40.06	\$	41.06	\$	42.09
069-100-006-000	7.5	\$	285.98	\$	293.18	\$	300.45	\$	307.95	\$	315.68
069-100-008-000	9.62	\$	366.81	\$	376.05	\$	385.38	\$	395.00	\$	404.91
069-100-010-000	5	\$	190.65	\$	195.45	\$	200.30	\$	205.30	\$	210.45
069-100-011-000	5	\$	190.65	\$	195.45	\$	200.30	\$	205.30	\$	210.45
069-100-012-000	5	\$	190.65	\$	195.45	\$	200.30	\$	205.30	\$	210.45
069-100-014-000	14.88	\$	567.37	\$	581.66	\$	596.09	\$	610.97	\$	626.30
069-100-015-000	4.81	\$	183.41	\$	188.02	\$	192.69	\$	197.50	\$	202.45
069-100-016-000	4.81	\$	183.41	\$	188.02	\$	192.69	\$	197.50	\$	202.45
069-100-017-000	4.56	\$	173.87	\$	178.25	\$	182.67	\$	187.23	\$	191.93
069-100-018-000	9.25	\$	352.70	\$	361.58	\$	370.56	\$	379.81	\$	389.33
069-100-028-000	12.43	\$	473.96	\$	485.89	\$	497.95	\$	510.38	\$	523.18
069-100-029-000	7.57	\$	288.64	\$	295.91	\$	303.25	\$	310.82	\$	318.62
069-100-030-000	1.23	\$	46.90	\$	48.08	\$	49.27	\$	50.50	\$	51.77
069-100-034-000	5.53	\$	210.86	\$	216.17	\$	221.53	\$	227.06	\$	232.76
069-100-036-000	2.5	\$	95.33	\$	97.73	\$	100.15	\$	102.65	\$	105.23
069-100-037-000	2.5	\$	95.33	\$	97.73	\$	100.15	\$	102.65	\$	105.23
069-100-039-000	5	\$	190.65	\$	195.45	\$	200.30	\$	205.30	\$	210.45
069-100-040-000	4.6	\$	175.40	\$	179.81	\$	184.28	\$	188.88	\$	193.61

069-100-042-000	9.1	\$	346.98	\$	355.72	\$	364.55	\$	373.65	\$	383.02
069-100-046-000	8.06	\$	307.33	\$	315.07	\$	322.88	\$	330.94	\$	339.25
069-100-047-000	5	\$	190.65	\$	195.45	\$	200.30	\$	205.30	\$	210.45
069-100-048-000	5	\$	190.65	\$	195.45	\$	200.30	\$	205.30	\$	210.45
069-100-049-000	10	\$	381.30	\$	390.90	\$	400.60	\$	410.60	\$	420.90
069-100-050-000	20	\$	762.60	\$	781.80	\$	801.20	\$	821.20	\$	841.80
069-100-052-000	2.07	\$	78.93	\$	80.92	\$	82.92	\$	84.99	\$	87.13
069-100-053-000	4	\$	152.52	\$	156.36	\$	160.24	\$	164.24	\$	168.36
069-100-055-000	4.45	\$	169.68	\$	173.95	\$	178.27	\$	182.72	\$	187.30
069-100-056-000	5.15	\$	196.37	\$	201.31	\$	206.31	\$	211.46	\$	216.76
069-100-057-000	4.57	\$	174.25	\$	178.64	\$	183.07	\$	187.64	\$	192.35
069-100-058-000	7.45	\$	284.07	\$	291.22	\$	298.45	\$	305.90	\$	313.57
069-100-059-000	10	\$	381.30	\$	390.90	\$	400.60	\$	410.60	\$	420.90
069-100-060-000	10	\$	381.30	\$	390.90	\$	400.60	\$	410.60	\$	420.90
069-100-061-000	9.8	\$	373.67	\$	383.08	\$	392.59	\$	402.39	\$	412.48
069-100-062-000	9.05	\$	345.08	\$	353.76	\$	362.54	\$	371.59	\$	380.91
069-110-001-000	9.24	\$	352.32	\$	361.19	\$	370.15	\$	379.39	\$	388.91
069-110-003-000	9.49	\$	361.85	\$	370.96	\$	380.17	\$	389.66	\$	399.43
069-110-004-000	8.98	\$	342.41	\$	351.03	\$	359.74	\$	368.72	\$	377.97
069-110-005-000	10	\$	381.30	\$	390.90	\$	400.60	\$	410.60	\$	420.90
069-110-007-000	5	\$	190.65	\$	195.45	\$	200.30	\$	205.30	\$	210.45
069-110-008-000	5	\$	190.65	\$	195.45	\$	200.30	\$	205.30	\$	210.45
069-110-009-000	10	\$	381.30	\$	390.90	\$	400.60	\$	410.60	\$	420.90
069-110-010-000	8.97	\$	342.03	\$	350.64	\$	359.34	\$	368.31	\$	377.55
069-110-015-000	10	\$	381.30	\$	390.90	\$	400.60	\$	410.60	\$	420.90
069-110-016-000	9	\$	343.17	\$	351.81	\$	360.54	\$	369.54	\$	378.81
069-110-017-000	6.7	\$	255.47	\$	261.90	\$	268.40	\$	275.10	\$	282.00
069-110-028-000	2	\$	76.26	\$	78.18	\$	80.12	\$	82.12	\$	84.18
069-110-031-000	1.87	\$	71.30	\$	73.10	\$	74.91	\$	76.78	\$	78.71
069-110-032-000	2.52	\$	96.09	\$	98.51	\$	100.95	\$	103.47	\$	106.07
069-110-035-000	9.54	\$	363.76	\$	372.92	\$	382.17	\$	391.71	\$	401.54
069-110-036-000	4.76	\$	181.50	\$	186.07	\$	190.69	\$	195.45	\$	200.35
069-110-037-000	4.76	\$	181.50	\$	186.07	\$	190.69	\$	195.45	\$	200.35
069-110-038-000	4.3	\$	163.96	\$	168.09	\$	172.26	\$	176.56	\$	180.99
069-110-041-000	9.49	\$	361.85	\$	370.96	\$	380.17	\$	389.66	\$	399.43
069-110-043-000	10	\$	381.30	\$	390.90	\$	400.60	\$	410.60	\$	420.90
069-110-045-000	2.65	\$	101.04	\$	103.59	\$	106.16	\$	108.81	\$	111.54
069-120-006-000	15.67	\$	597.50	\$	612.54	\$	627.74	\$	643.41	\$	659.55
069-120-007-000	19	\$	724.47	\$	742.71	\$	761.14	\$	780.14	\$	799.71
069-130-003-000	17.74	\$	676.43	\$	693.46	\$	710.66	\$	728.40	\$	746.68
069-130-004-000	19.1	\$	728.28	\$	746.62	\$	765.15	\$	784.25	\$	803.92
069-130-005-000	19.26	\$	734.38	\$	752.87	\$	771.56	\$	790.82	\$	810.65
069-130-006-000	9.6	\$	366.05	\$	375.26	\$	384.58	\$	394.18	\$	404.06
069-130-010-000	9.49	\$	361.85	\$	370.96	\$	380.17	\$	389.66	\$	399.43
069-130-015-000	9.65	\$	367.95	\$	377.22	\$	386.58	\$	396.23	\$	406.17

069-130-016-000	4.81	\$	183.41	\$	188.02	\$	192.69	\$	197.50	\$	202.45
069-130-021-000	4.8	\$	183.02	\$	187.63	\$	192.29	\$	197.09	\$	202.03
069-130-022-000	4.8	\$	183.02	\$	187.63	\$	192.29	\$	197.09	\$	202.03
069-130-023-000	9.63	\$	367.19	\$	376.44	\$	385.78	\$	395.41	\$	405.33
069-130-024-000	10	\$	381.30	\$	390.90	\$	400.60	\$	410.60	\$	420.90
069-130-025-000	14.9	\$	568.14	\$	582.44	\$	596.89	\$	611.79	\$	627.14
069-130-026-000	5	\$	190.65	\$	195.45	\$	200.30	\$	205.30	\$	210.45
069-130-027-000	4.81	\$	183.41	\$	188.02	\$	192.69	\$	197.50	\$	202.45
069-130-028-000	4.81	\$	183.41	\$	188.02	\$	192.69	\$	197.50	\$	202.45
069-130-029-000	10.25	\$	390.83	\$	400.67	\$	410.62	\$	420.87	\$	431.42
069-130-031-000	4.55	\$	173.49	\$	177.86	\$	182.27	\$	186.82	\$	191.51
069-130-032-000	4.74	\$	180.74	\$	185.29	\$	189.88	\$	194.62	\$	199.51
069-130-033-000	8.13	\$	310.00	\$	317.80	\$	325.69	\$	333.82	\$	342.19
069-130-034-000	9.97	\$	380.16	\$	389.73	\$	399.40	\$	409.37	\$	419.64
069-130-035-000	5.34	\$	203.61	\$	208.74	\$	213.92	\$	219.26	\$	224.76
069-130-036-000	4.77	\$	181.88	\$	186.46	\$	191.09	\$	195.86	\$	200.77
069-130-037-000	13.3	\$	507.13	\$	519.90	\$	532.80	\$	546.10	\$	559.80
069-130-038-000	0.75	\$	28.60	\$	29.32	\$	30.05	\$	30.80	\$	31.57
069-130-039-000	10	\$	381.30	\$	390.90	\$	400.60	\$	410.60	\$	420.90
069-130-040-000	18.87	\$	719.51	\$	737.63	\$	755.93	\$	774.80	\$	794.24
069-140-002-000	4.82	\$	183.79	\$	188.41	\$	193.09	\$	197.91	\$	202.87
069-140-005-000	1.94	\$	73.97	\$	75.83	\$	77.72	\$	79.66	\$	81.65
069-140-007-000	2.5	\$	95.33	\$	97.73	\$	100.15	\$	102.65	\$	105.23
069-140-008-000	5	\$	190.65	\$	195.45	\$	200.30	\$	205.30	\$	210.45
069-140-009-000	2.5	\$	95.33	\$	97.73	\$	100.15	\$	102.65	\$	105.23
069-140-010-000	19.25	\$	734.00	\$	752.48	\$	771.16	\$	790.41	\$	810.23
069-140-013-000	9.24	\$	352.32	\$	361.19	\$	370.15	\$	379.39	\$	388.91
069-140-018-000	7.64	\$	291.31	\$	298.65	\$	306.06	\$	313.70	\$	321.57
069-140-019-000	8.45	\$	322.20	\$	330.31	\$	338.51	\$	346.96	\$	355.66
069-140-021-000	4.13	\$	157.48	\$	161.44	\$	165.45	\$	169.58	\$	173.83
069-140-023-000	6.42	\$	244.79	\$	250.96	\$	257.19	\$	263.61	\$	270.22
069-140-030-000	2.37	\$	90.37	\$	92.64	\$	94.94	\$	97.31	\$	99.75
069-140-036-000	5	\$	190.65	\$	195.45	\$	200.30	\$	205.30	\$	210.45
069-140-037-000	4.25	\$	162.05	\$	166.13	\$	170.26	\$	174.51	\$	178.88
069-140-038-000	2.37	\$	90.37	\$	92.64	\$	94.94	\$	97.31	\$	99.75
069-140-040-000	6.92	\$	263.86	\$	270.50	\$	277.22	\$	284.14	\$	291.26
069-140-041-000	4.81	\$	183.41	\$	188.02	\$	192.69	\$	197.50	\$	202.45
069-140-042-000	4.81	\$	183.41	\$	188.02	\$	192.69	\$	197.50	\$	202.45
069-140-043-000	9.5	\$	362.24	\$	371.36	\$	380.57	\$	390.07	\$	399.86
069-140-044-000	9.5	\$	362.24	\$	371.36	\$	380.57	\$	390.07	\$	399.86
069-140-045-000	9.5	\$	362.24	\$	371.36	\$	380.57	\$	390.07	\$	399.86
069-140-046-000	2.4	\$	91.51	\$	93.82	\$	96.14	\$	98.54	\$	101.02
069-140-047-000	2.4	\$	91.51	\$	93.82	\$	96.14	\$	98.54	\$	101.02
069-140-048-000	2.41	\$	91.89	\$	94.21	\$	96.54	\$	98.95	\$	101.44
069-140-049-000	2.41	\$	91.89	\$	94.21	\$	96.54	\$	98.95	\$	101.44

069-140-050-000	2.44	\$	93.04	\$	95.38	\$	97.75	\$	100.19	\$	102.70
069-140-051-000	2.34	\$	89.22	\$	91.47	\$	93.74	\$	96.08	\$	98.49
069-140-052-000	2.31	\$	88.08	\$	90.30	\$	92.54	\$	94.85	\$	97.23
069-140-053-000	2.31	\$	88.08	\$	90.30	\$	92.54	\$	94.85	\$	97.23
069-140-055-000	3.63	\$	138.41	\$	141.90	\$	145.42	\$	149.05	\$	152.79
069-140-056-000	15.09	\$	575.38	\$	589.87	\$	604.51	\$	619.60	\$	635.14
069-140-058-000	4.98	\$	189.89	\$	194.67	\$	199.50	\$	204.48	\$	209.61
069-140-059-000	3.5	\$	133.46	\$	136.82	\$	140.21	\$	143.71	\$	147.32
069-140-060-000	1.94	\$	73.97	\$	75.83	\$	77.72	\$	79.66	\$	81.65
069-140-061-000	2.38	\$	90.75	\$	93.03	\$	95.34	\$	97.72	\$	100.17
069-140-062-000	2.38	\$	90.75	\$	93.03	\$	95.34	\$	97.72	\$	100.17
069-140-063-000	2.37	\$	90.37	\$	92.64	\$	94.94	\$	97.31	\$	99.75
069-140-064-000	2.37	\$	90.37	\$	92.64	\$	94.94	\$	97.31	\$	99.75
069-140-065-000	2.37	\$	90.37	\$	92.64	\$	94.94	\$	97.31	\$	99.75
069-140-066-000	2.37	\$	90.37	\$	92.64	\$	94.94	\$	97.31	\$	99.75
069-140-067-000	2.37	\$	90.37	\$	92.64	\$	94.94	\$	97.31	\$	99.75
069-140-068-000	2.37	\$	90.37	\$	92.64	\$	94.94	\$	97.31	\$	99.75
069-140-069-000	2.24	\$	85.41	\$	87.56	\$	89.73	\$	91.97	\$	94.28
069-140-070-000	2.27	\$	86.56	\$	88.73	\$	90.94	\$	93.21	\$	95.54
069-140-071-000	2.27	\$	86.56	\$	88.73	\$	90.94	\$	93.21	\$	95.54
069-140-072-000	2.27	\$	86.56	\$	88.73	\$	90.94	\$	93.21	\$	95.54
069-140-073-000	2.27	\$	86.56	\$	88.73	\$	90.94	\$	93.21	\$	95.54
069-140-074-000	2.27	\$	86.56	\$	88.73	\$	90.94	\$	93.21	\$	95.54
069-140-075-000	1.85	\$	70.54	\$	72.32	\$	74.11	\$	75.96	\$	77.87
069-140-076-000	2.27	\$	86.56	\$	88.73	\$	90.94	\$	93.21	\$	95.54
069-140-077-000	2.27	\$	86.56	\$	88.73	\$	90.94	\$	93.21	\$	95.54
069-140-078-000	2.27	\$	86.56	\$	88.73	\$	90.94	\$	93.21	\$	95.54
069-140-079-000	2.27	\$	86.56	\$	88.73	\$	90.94	\$	93.21	\$	95.54
069-140-080-000	1.85	\$	70.54	\$	72.32	\$	74.11	\$	75.96	\$	77.87
069-140-081-000	7.7	\$	293.60	\$	300.99	\$	308.46	\$	316.16	\$	324.09
069-140-082-000	4	\$	152.52	\$	156.36	\$	160.24	\$	164.24	\$	168.36
069-140-083-000	4.12	\$	157.10	\$	161.05	\$	165.05	\$	169.17	\$	173.41
069-140-084-000	8.24	\$	314.19	\$	322.10	\$	330.09	\$	338.33	\$	346.82
069-140-085-000	9.51	\$	362.62	\$	371.75	\$	380.97	\$	390.48	\$	400.28
069-140-086-000	4.76	\$	181.50	\$	186.07	\$	190.69	\$	195.45	\$	200.35
069-140-087-000	5.33	\$	203.23	\$	208.35	\$	213.52	\$	218.85	\$	224.34
069-140-088-000	2.09	\$	79.69	\$	81.70	\$	83.73	\$	85.82	\$	87.97
069-140-089-000	2.09	\$	79.69	\$	81.70	\$	83.73	\$	85.82	\$	87.97
069-140-090-000	8.36	\$	318.77	\$	326.79	\$	334.90	\$	343.26	\$	351.87
069-140-091-000	1.64	\$	62.53	\$	64.11	\$	65.70	\$	67.34	\$	69.03
069-150-007-000	4.81	\$	183.41	\$	188.02	\$	192.69	\$	197.50	\$	202.45
069-150-008-000	5	\$	190.65	\$	195.45	\$	200.30	\$	205.30	\$	210.45
069-150-010-000	9.25	\$	352.70	\$	361.58	\$	370.56	\$	379.81	\$	389.33
069-150-012-000	4.82	\$	183.79	\$	188.41	\$	193.09	\$	197.91	\$	202.87
069-150-014-000	4.83	\$	184.17	\$	188.80	\$	193.49	\$	198.32	\$	203.29

069-150-029-000	10	\$	381.30	\$	390.90	\$	400.60	\$	410.60	\$	420.90
069-150-046-000	10	\$	381.30	\$	390.90	\$	400.60	\$	410.60	\$	420.90
069-150-047-000	10	\$	381.30	\$	390.90	\$	400.60	\$	410.60	\$	420.90
069-150-048-000	9	\$	343.17	\$	351.81	\$	360.54	\$	369.54	\$	378.81
069-150-049-000	2.47	\$	94.18	\$	96.55	\$	98.95	\$	101.42	\$	103.96
069-150-050-000	3.24	\$	123.54	\$	126.65	\$	129.79	\$	133.03	\$	136.37
069-150-051-000	1.45	\$	55.29	\$	56.68	\$	58.09	\$	59.54	\$	61.03
069-150-052-000	1.46	\$	55.67	\$	57.07	\$	58.49	\$	59.95	\$	61.45
069-150-071-000	1	\$	38.13	\$	39.09	\$	40.06	\$	41.06	\$	42.09
069-150-072-000	19	\$	724.47	\$	742.71	\$	761.14	\$	780.14	\$	799.71
069-150-073-000	7.8	\$	297.41	\$	304.90	\$	312.47	\$	320.27	\$	328.30
069-150-074-000	2.2	\$	83.89	\$	86.00	\$	88.13	\$	90.33	\$	92.60
069-160-002-000	20	\$	762.60	\$	781.80	\$	801.20	\$	821.20	\$	841.80
069-160-006-000	14.68	\$	559.75	\$	573.84	\$	588.08	\$	602.76	\$	617.88
069-160-008-000	9.27	\$	353.47	\$	362.36	\$	371.36	\$	380.63	\$	390.17
069-160-009-000	10	\$	381.30	\$	390.90	\$	400.60	\$	410.60	\$	420.90
069-160-012-000	5.94	\$	226.49	\$	232.19	\$	237.96	\$	243.90	\$	250.01
069-160-015-000	10	\$	381.30	\$	390.90	\$	400.60	\$	410.60	\$	420.90
069-160-016-000	27.41	\$	1,045.14	\$	1,071.46	\$	1,098.04	\$	1,125.45	\$	1,153.69
069-160-018-000	20	\$	762.60	\$	781.80	\$	801.20	\$	821.20	\$	841.80
069-160-019-000	8.12	\$	309.62	\$	317.41	\$	325.29	\$	333.41	\$	341.77
069-160-020-000	9.26	\$	353.08	\$	361.97	\$	370.96	\$	380.22	\$	389.75
069-160-024-000	25	\$	953.25	\$	977.25	\$	1,001.50	\$	1,026.50	\$	1,052.25
069-160-029-000	6.9	\$	263.10	\$	269.72	\$	276.41	\$	283.31	\$	290.42
069-160-030-000	6.9	\$	263.10	\$	269.72	\$	276.41	\$	283.31	\$	290.42
069-170-002-000	20	\$	762.60	\$	781.80	\$	801.20	\$	821.20	\$	841.80
069-170-003-000	19.44	\$	741.25	\$	759.91	\$	778.77	\$	798.21	\$	818.23
069-170-004-000	17.75	\$	676.81	\$	693.85	\$	711.07	\$	728.82	\$	747.10
069-170-006-000	28.53	\$	1,087.85	\$	1,115.24	\$	1,142.91	\$	1,171.44	\$	1,200.83
069-170-007-000	9.88	\$	376.72	\$	386.21	\$	395.79	\$	405.67	\$	415.85
069-170-009-000	28.6	\$	1,090.52	\$	1,117.97	\$	1,145.72	\$	1,174.32	\$	1,203.77
069-170-017-000	42.75	\$	1,630.06	\$	1,671.10	\$	1,712.57	\$	1,755.32	\$	1,799.35
069-170-018-000	9	\$	343.17	\$	351.81	\$	360.54	\$	369.54	\$	378.81
069-170-024-000	2.97	\$	113.25	\$	116.10	\$	118.98	\$	121.95	\$	125.01
069-170-025-000	3.23	\$	123.16	\$	126.26	\$	129.39	\$	132.62	\$	135.95
069-170-026-000	2.97	\$	113.25	\$	116.10	\$	118.98	\$	121.95	\$	125.01
069-170-027-000	8.5	\$	324.11	\$	332.27	\$	340.51	\$	349.01	\$	357.77
069-170-028-000	9.5	\$	362.24	\$	371.36	\$	380.57	\$	390.07	\$	399.86
069-170-029-000	18.93	\$	721.80	\$	739.97	\$	758.34	\$	777.27	\$	796.76
069-190-003-000	14	\$	533.82	\$	547.26	\$	560.84	\$	574.84	\$	589.26
069-190-004-000	39.16	\$	1,493.17	\$	1,530.76	\$	1,568.75	\$	1,607.91	\$	1,648.24
069-190-005-000	32.92	\$	1,255.24	\$	1,286.84	\$	1,318.78	\$	1,351.70	\$	1,385.60
069-190-008-000	15.34	\$	584.91	\$	599.64	\$	614.52	\$	629.86	\$	645.66
069-190-009-000	22.42	\$	854.87	\$	876.40	\$	898.15	\$	920.57	\$	943.66
069-190-011-000	34.01	\$	1,296.80	\$	1,329.45	\$	1,362.44	\$	1,396.45	\$	1,431.48

069-190-012-000	18.44	\$	703.12	\$	720.82	\$	738.71	\$	757.15	\$	776.14
069-190-014-000	12.43	\$	473.96	\$	485.89	\$	497.95	\$	510.38	\$	523.18
069-190-015-000	24.47	\$	933.04	\$	956.53	\$	980.27	\$	1,004.74	\$	1,029.94
069-200-001-000	8.37	\$	319.15	\$	327.18	\$	335.30	\$	343.67	\$	352.29
069-200-003-000	19.38	\$	738.96	\$	757.56	\$	776.36	\$	795.74	\$	815.70
069-200-004-000	9.18	\$	350.03	\$	358.85	\$	367.75	\$	376.93	\$	386.39
069-200-008-000	20	\$	762.60	\$	781.80	\$	801.20	\$	821.20	\$	841.80
069-200-016-000	7.17	\$	273.39	\$	280.28	\$	287.23	\$	294.40	\$	301.79
069-200-017-000	9.6	\$	366.05	\$	375.26	\$	384.58	\$	394.18	\$	404.06
069-200-018-000	9.5	\$	362.24	\$	371.36	\$	380.57	\$	390.07	\$	399.86
069-200-019-000	9.5	\$	362.24	\$	371.36	\$	380.57	\$	390.07	\$	399.86
069-210-004-000	19.25	\$	734.00	\$	752.48	\$	771.16	\$	790.41	\$	810.23
069-210-020-000	9.78	\$	372.91	\$	382.30	\$	391.79	\$	401.57	\$	411.64
069-210-021-000	7.2	\$	274.54	\$	281.45	\$	288.43	\$	295.63	\$	303.05
069-210-043-000	1.72	\$	65.58	\$	67.23	\$	68.90	\$	70.62	\$	72.39
069-210-045-000	7.9	\$	301.23	\$	308.81	\$	316.47	\$	324.37	\$	332.51
069-210-049-000	1.25	\$	47.66	\$	48.86	\$	50.08	\$	51.33	\$	52.61
069-210-059-000	3.39	\$	129.26	\$	132.52	\$	135.80	\$	139.19	\$	142.69
069-210-060-000	2.04	\$	77.79	\$	79.74	\$	81.72	\$	83.76	\$	85.86
069-210-061-000	2.04	\$	77.79	\$	79.74	\$	81.72	\$	83.76	\$	85.86
069-210-065-000	1.85	\$	70.54	\$	72.32	\$	74.11	\$	75.96	\$	77.87
069-210-066-000	2.28	\$	86.94	\$	89.13	\$	91.34	\$	93.62	\$	95.97
069-210-067-000	3.46	\$	131.93	\$	135.25	\$	138.61	\$	142.07	\$	145.63
069-210-068-000	5.57	\$	212.38	\$	217.73	\$	223.13	\$	228.70	\$	234.44
069-210-076-000	1	\$	38.13	\$	39.09	\$	40.06	\$	41.06	\$	42.09
069-210-077-000	3.71	\$	141.46	\$	145.02	\$	148.62	\$	152.33	\$	156.15
069-210-081-000	7.27	\$	277.21	\$	284.18	\$	291.24	\$	298.51	\$	305.99
069-210-082-000	10	\$	381.30	\$	390.90	\$	400.60	\$	410.60	\$	420.90
069-210-084-000	1.36	\$	51.86	\$	53.16	\$	54.48	\$	55.84	\$	57.24
069-210-085-000	0.91	\$	34.70	\$	35.57	\$	36.45	\$	37.36	\$	38.30
069-210-086-000	5.39	\$	205.52	\$	210.70	\$	215.92	\$	221.31	\$	226.87
069-220-001-000	4.62	\$	176.16	\$	180.60	\$	185.08	\$	189.70	\$	194.46
069-220-008-000	1.48	\$	56.43	\$	57.85	\$	59.29	\$	60.77	\$	62.29
069-230-005-000	69.22	\$	2,639.36	\$	2,705.81	\$	2,772.95	\$	2,842.17	\$	2,913.47
069-230-006-000	79.04	\$	3,013.80	\$	3,089.67	\$	3,166.34	\$	3,245.38	\$	3,326.79
069-230-009-000	45.22	\$	1,724.24	\$	1,767.65	\$	1,811.51	\$	1,856.73	\$	1,903.31
069-230-010-000	29.96	\$	1,142.37	\$	1,171.14	\$	1,200.20	\$	1,230.16	\$	1,261.02
069-230-011-000	46.94	\$	1,789.82	\$	1,834.88	\$	1,880.42	\$	1,927.36	\$	1,975.70
069-240-012-000	49.59	\$	1,890.87	\$	1,938.47	\$	1,986.58	\$	2,036.17	\$	2,087.24
069-240-013-000	49.66	\$	1,893.54	\$	1,941.21	\$	1,989.38	\$	2,039.04	\$	2,090.19
069-240-016-000	10	\$	381.30	\$	390.90	\$	400.60	\$	410.60	\$	420.90
069-240-017-000	28.09	\$	1,071.07	\$	1,098.04	\$	1,125.29	\$	1,153.38	\$	1,182.31
069-240-018-000	9.5	\$	362.24	\$	371.36	\$	380.57	\$	390.07	\$	399.86
069-240-019-000	9.5	\$	362.24	\$	371.36	\$	380.57	\$	390.07	\$	399.86
069-240-021-000	10	\$	381.30	\$	390.90	\$	400.60	\$	410.60	\$	420.90

069-240-022-000	10	\$	381.30	\$	390.90	\$	400.60	\$	410.60	\$	420.90
069-240-023-000	18	\$	686.34	\$	703.62	\$	721.08	\$	739.08	\$	757.62
069-240-024-000	18.5	\$	705.41	\$	723.17	\$	741.11	\$	759.61	\$	778.67
069-240-025-000	10	\$	381.30	\$	390.90	\$	400.60	\$	410.60	\$	420.90
069-240-026-000	10	\$	381.30	\$	390.90	\$	400.60	\$	410.60	\$	420.90
069-250-004-000	9.62	\$	366.81	\$	376.05	\$	385.38	\$	395.00	\$	404.91
069-250-008-000	10	\$	381.30	\$	390.90	\$	400.60	\$	410.60	\$	420.90
069-250-014-000	10	\$	381.30	\$	390.90	\$	400.60	\$	410.60	\$	420.90
069-250-021-000	19.35	\$	737.82	\$	756.39	\$	775.16	\$	794.51	\$	814.44
069-250-029-000	20	\$	762.60	\$	781.80	\$	801.20	\$	821.20	\$	841.80
069-250-031-000	16.07	\$	612.75	\$	628.18	\$	643.76	\$	659.83	\$	676.39
069-250-032-000	1.9	\$	72.45	\$	74.27	\$	76.11	\$	78.01	\$	79.97
069-250-033-000	8.77	\$	334.40	\$	342.82	\$	351.33	\$	360.10	\$	369.13
069-250-034-000	8.78	\$	334.78	\$	343.21	\$	351.73	\$	360.51	\$	369.55
069-250-035-000	7.06	\$	269.20	\$	275.98	\$	282.82	\$	289.88	\$	297.16
069-250-036-000	7.06	\$	269.20	\$	275.98	\$	282.82	\$	289.88	\$	297.16
069-250-037-000	39.58	\$	1,509.19	\$	1,547.18	\$	1,585.57	\$	1,625.15	\$	1,665.92
069-250-038-000	7.05	\$	268.82	\$	275.58	\$	282.42	\$	289.47	\$	296.73
069-250-039-000	9.85	\$	375.58	\$	385.04	\$	394.59	\$	404.44	\$	414.59
069-260-001-000	4.46	\$	170.06	\$	174.34	\$	178.67	\$	183.13	\$	187.72
069-260-004-000	4.85	\$	184.93	\$	189.59	\$	194.29	\$	199.14	\$	204.14
069-260-005-000	4.85	\$	184.93	\$	189.59	\$	194.29	\$	199.14	\$	204.14
069-260-006-000	39.36	\$	1,500.80	\$	1,538.58	\$	1,576.76	\$	1,616.12	\$	1,656.66
069-260-007-000	8.58	\$	327.16	\$	335.39	\$	343.71	\$	352.29	\$	361.13
069-260-008-000	7.83	\$	298.56	\$	306.07	\$	313.67	\$	321.50	\$	329.56
069-260-012-000	5.77	\$	220.01	\$	225.55	\$	231.15	\$	236.92	\$	242.86
069-260-017-000	19.16	\$	730.57	\$	748.96	\$	767.55	\$	786.71	\$	806.44
069-260-018-000	1.34	\$	51.09	\$	52.38	\$	53.68	\$	55.02	\$	56.40
069-260-019-000	1.34	\$	51.09	\$	52.38	\$	53.68	\$	55.02	\$	56.40
069-260-020-000	2.79	\$	106.38	\$	109.06	\$	111.77	\$	114.56	\$	117.43
069-260-021-000	3.36	\$	128.12	\$	131.34	\$	134.60	\$	137.96	\$	141.42
069-260-022-000	2.42	\$	92.27	\$	94.60	\$	96.95	\$	99.37	\$	101.86
069-260-023-000	1.61	\$	61.39	\$	62.93	\$	64.50	\$	66.11	\$	67.76
069-260-024-000	1.59	\$	60.63	\$	62.15	\$	63.70	\$	65.29	\$	66.92
069-260-025-000	1.08	\$	41.18	\$	42.22	\$	43.26	\$	44.34	\$	45.46
069-260-026-000	1.2	\$	45.76	\$	46.91	\$	48.07	\$	49.27	\$	50.51
069-260-036-000	2.12	\$	80.84	\$	82.87	\$	84.93	\$	87.05	\$	89.23
069-260-037-000	2.12	\$	80.84	\$	82.87	\$	84.93	\$	87.05	\$	89.23
069-260-038-000	2.11	\$	80.45	\$	82.48	\$	84.53	\$	86.64	\$	88.81
069-260-039-000	2.07	\$	78.93	\$	80.92	\$	82.92	\$	84.99	\$	87.13
069-260-067-000	3.75	\$	142.99	\$	146.59	\$	150.23	\$	153.98	\$	157.84
069-260-068-000	9.38	\$	357.66	\$	366.66	\$	375.76	\$	385.14	\$	394.80
069-260-069-000	9.81	\$	374.06	\$	383.47	\$	392.99	\$	402.80	\$	412.90
069-260-070-000	9.82	\$	374.44	\$	383.86	\$	393.39	\$	403.21	\$	413.32
069-260-073-000	4.75	\$	181.12	\$	185.68	\$	190.29	\$	195.04	\$	199.93

071-030-006-000	20.15	\$	768.32	\$	787.66	\$	807.21	\$	827.36	\$	848.11
071-030-016-000	11.33	\$	432.01	\$	442.89	\$	453.88	\$	465.21	\$	476.88
071-030-017-000	10.25	\$	390.83	\$	400.67	\$	410.62	\$	420.87	\$	431.42
071-300-001-000	9.65	\$	367.95	\$	377.22	\$	386.58	\$	396.23	\$	406.17
071-300-005-000	4.44	\$	169.30	\$	173.56	\$	177.87	\$	182.31	\$	186.88
071-300-029-000	7.52	\$	286.74	\$	293.96	\$	301.25	\$	308.77	\$	316.52
071-300-030-000	9.15	\$	348.89	\$	357.67	\$	366.55	\$	375.70	\$	385.12
071-300-041-000	4.64	\$	176.92	\$	181.38	\$	185.88	\$	190.52	\$	195.30
071-300-042-000	4.19	\$	159.76	\$	163.79	\$	167.85	\$	172.04	\$	176.36
071-300-052-000	8	\$	305.04	\$	312.72	\$	320.48	\$	328.48	\$	336.72
071-300-060-000	6	\$	228.78	\$	234.54	\$	240.36	\$	246.36	\$	252.54
071-300-061-000	4	\$	152.52	\$	156.36	\$	160.24	\$	164.24	\$	168.36
071-300-063-000	9.37	\$	357.28	\$	366.27	\$	375.36	\$	384.73	\$	394.38
071-300-064-000	1.03	\$	39.27	\$	40.26	\$	41.26	\$	42.29	\$	43.35
071-300-065-000	3.2	\$	122.02	\$	125.09	\$	128.19	\$	131.39	\$	134.69
071-300-066-000	2.94	\$	112.10	\$	114.92	\$	117.78	\$	120.72	\$	123.74
071-300-069-000	1.45	\$	55.29	\$	56.68	\$	58.09	\$	59.54	\$	61.03
071-300-070-000	4.48	\$	170.82	\$	175.12	\$	179.47	\$	183.95	\$	188.56
071-300-071-000	1.19	\$	45.37	\$	46.52	\$	47.67	\$	48.86	\$	50.09
071-300-072-000	1.78	\$	67.87	\$	69.58	\$	71.31	\$	73.09	\$	74.92
087-020-009-000	18	\$	686.34	\$	703.62	\$	721.08	\$	739.08	\$	757.62
087-020-011-000	19	\$	724.47	\$	742.71	\$	761.14	\$	780.14	\$	799.71
087-020-014-000	14	\$	533.82	\$	547.26	\$	560.84	\$	574.84	\$	589.26
087-020-015-000	6	\$	228.78	\$	234.54	\$	240.36	\$	246.36	\$	252.54
087-020-016-000	17.11	\$	652.40	\$	668.83	\$	685.43	\$	702.54	\$	720.16
087-020-017-000	20	\$	762.60	\$	781.80	\$	801.20	\$	821.20	\$	841.80
087-020-018-000	5	\$	190.65	\$	195.45	\$	200.30	\$	205.30	\$	210.45
087-020-023-000	27	\$	1,029.51	\$	1,055.43	\$	1,081.62	\$	1,108.62	\$	1,136.43
087-020-024-000	2.5	\$	95.33	\$	97.73	\$	100.15	\$	102.65	\$	105.23
087-020-025-000	3.5	\$	133.46	\$	136.82	\$	140.21	\$	143.71	\$	147.32
087-020-026-000	8	\$	305.04	\$	312.72	\$	320.48	\$	328.48	\$	336.72
087-020-027-000	19.62	\$	748.11	\$	766.95	\$	785.98	\$	805.60	\$	825.81
087-020-028-000	16.72	\$	637.53	\$	653.58	\$	669.80	\$	686.52	\$	703.74
087-020-032-000	30	\$	1,143.90	\$	1,172.70	\$	1,201.80	\$	1,231.80	\$	1,262.70
087-030-010-000	2.2	\$	83.89	\$	86.00	\$	88.13	\$	90.33	\$	92.60
087-030-011-000	3.95	\$	150.61	\$	154.41	\$	158.24	\$	162.19	\$	166.26
087-030-012-000	10	\$	381.30	\$	390.90	\$	400.60	\$	410.60	\$	420.90
087-030-013-000	3.08	\$	117.44	\$	120.40	\$	123.38	\$	126.46	\$	129.64
087-030-014-000	10	\$	381.30	\$	390.90	\$	400.60	\$	410.60	\$	420.90
087-030-015-000	10	\$	381.30	\$	390.90	\$	400.60	\$	410.60	\$	420.90
087-030-016-000	10	\$	381.30	\$	390.90	\$	400.60	\$	410.60	\$	420.90
087-030-017-000	10	\$	381.30	\$	390.90	\$	400.60	\$	410.60	\$	420.90
087-030-018-000	10	\$	381.30	\$	390.90	\$	400.60	\$	410.60	\$	420.90
087-030-019-000	9.97	\$	380.16	\$	389.73	\$	399.40	\$	409.37	\$	419.64
087-030-020-000	9.97	\$	380.16	\$	389.73	\$	399.40	\$	409.37	\$	419.64

087-030-021-000	10	\$	381.30	\$	390.90	\$	400.60	\$	410.60	\$	420.90
087-030-022-000	9.9	\$	377.49	\$	386.99	\$	396.59	\$	406.49	\$	416.69
087-030-023-000	9.94	\$	379.01	\$	388.55	\$	398.20	\$	408.14	\$	418.37
087-030-024-000	10	\$	381.30	\$	390.90	\$	400.60	\$	410.60	\$	420.90
087-030-025-000	10	\$	381.30	\$	390.90	\$	400.60	\$	410.60	\$	420.90
087-030-026-000	9.93	\$	378.63	\$	388.16	\$	397.80	\$	407.73	\$	417.95
087-030-027-000	9.91	\$	377.87	\$	387.38	\$	396.99	\$	406.90	\$	417.11
087-040-004-000	19.66	\$	749.64	\$	768.51	\$	787.58	\$	807.24	\$	827.49
087-040-013-000	19.91	\$	759.17	\$	778.28	\$	797.59	\$	817.50	\$	838.01
087-040-015-000	8.15	\$	310.76	\$	318.58	\$	326.49	\$	334.64	\$	343.03
087-040-016-000	8.88	\$	338.59	\$	347.12	\$	355.73	\$	364.61	\$	373.76
087-040-030-000	1.56	\$	59.48	\$	60.98	\$	62.49	\$	64.05	\$	65.66
087-040-037-000	0.23	\$	8.77	\$	8.99	\$	9.21	\$	9.44	\$	9.68
087-040-041-000	3.9	\$	148.71	\$	152.45	\$	156.23	\$	160.13	\$	164.15
087-040-044-000	2.87	\$	109.43	\$	112.19	\$	114.97	\$	117.84	\$	120.80
087-040-045-000	3	\$	114.39	\$	117.27	\$	120.18	\$	123.18	\$	126.27
087-040-046-000	3.02	\$	115.15	\$	118.05	\$	120.98	\$	124.00	\$	127.11
087-040-047-000	2.64	\$	100.66	\$	103.20	\$	105.76	\$	108.40	\$	111.12
087-040-048-000	2.64	\$	100.66	\$	103.20	\$	105.76	\$	108.40	\$	111.12
087-040-049-000	2.64	\$	100.66	\$	103.20	\$	105.76	\$	108.40	\$	111.12
087-040-050-000	2.88	\$	109.81	\$	112.58	\$	115.37	\$	118.25	\$	121.22
087-040-057-000	1.13	\$	43.09	\$	44.17	\$	45.27	\$	46.40	\$	47.56
087-040-058-000	0.3	\$	11.44	\$	11.73	\$	12.02	\$	12.32	\$	12.63
087-040-061-000	7.13	\$	271.87	\$	278.71	\$	285.63	\$	292.76	\$	300.10
087-040-064-000	1.15	\$	43.85	\$	44.95	\$	46.07	\$	47.22	\$	48.40
087-040-070-000	3.11	\$	118.58	\$	121.57	\$	124.59	\$	127.70	\$	130.90
087-040-071-000	1.69	\$	64.44	\$	66.06	\$	67.70	\$	69.39	\$	71.13
087-040-072-000	0.25	\$	9.53	\$	9.77	\$	10.02	\$	10.27	\$	10.52
087-040-073-000	4.45	\$	169.68	\$	173.95	\$	178.27	\$	182.72	\$	187.30
087-040-074-000	9.28	\$	353.85	\$	362.76	\$	371.76	\$	381.04	\$	390.60
087-040-075-000	1.36	\$	51.86	\$	53.16	\$	54.48	\$	55.84	\$	57.24
087-040-076-000	62.59	\$	2,386.56	\$	2,446.64	\$	2,507.36	\$	2,569.95	\$	2,634.41
087-040-077-000	1.92	\$	73.21	\$	75.05	\$	76.92	\$	78.84	\$	80.81
087-050-001-000	7.79	\$	297.03	\$	304.51	\$	312.07	\$	319.86	\$	327.88
087-050-002-000	4.87	\$	185.69	\$	190.37	\$	195.09	\$	199.96	\$	204.98
087-050-006-000	9.53	\$	363.38	\$	372.53	\$	381.77	\$	391.30	\$	401.12
087-050-009-000	4.78	\$	182.26	\$	186.85	\$	191.49	\$	196.27	\$	201.19
087-050-011-000	8.02	\$	305.80	\$	313.50	\$	321.28	\$	329.30	\$	337.56
087-050-021-000	9.5	\$	362.24	\$	371.36	\$	380.57	\$	390.07	\$	399.86
087-050-024-000	4.6	\$	175.40	\$	179.81	\$	184.28	\$	188.88	\$	193.61
087-050-031-000	4.76	\$	181.50	\$	186.07	\$	190.69	\$	195.45	\$	200.35
087-050-043-000	4.26	\$	162.43	\$	166.52	\$	170.66	\$	174.92	\$	179.30
087-050-048-000	9.41	\$	358.80	\$	367.84	\$	376.96	\$	386.37	\$	396.07
087-050-050-000	8.07	\$	307.71	\$	315.46	\$	323.28	\$	331.35	\$	339.67
087-050-053-000	3.92	\$	149.47	\$	153.23	\$	157.04	\$	160.96	\$	164.99

087-050-054-000	1.97	\$	75.12	\$	77.01	\$	78.92	\$	80.89	\$	82.92
087-050-055-000	4.2	\$	160.15	\$	164.18	\$	168.25	\$	172.45	\$	176.78
087-050-056-000	3.38	\$	128.88	\$	132.12	\$	135.40	\$	138.78	\$	142.26
087-050-057-000	14.3	\$	545.26	\$	558.99	\$	572.86	\$	587.16	\$	601.89
087-050-059-000	1.54	\$	58.72	\$	60.20	\$	61.69	\$	63.23	\$	64.82
087-050-060-000	1	\$	38.13	\$	39.09	\$	40.06	\$	41.06	\$	42.09
087-050-062-000	9.47	\$	361.09	\$	370.18	\$	379.37	\$	388.84	\$	398.59
087-050-063-000	2.39	\$	91.13	\$	93.43	\$	95.74	\$	98.13	\$	100.60
087-050-064-000	2.39	\$	91.13	\$	93.43	\$	95.74	\$	98.13	\$	100.60
087-050-065-000	2.34	\$	89.22	\$	91.47	\$	93.74	\$	96.08	\$	98.49
087-050-066-000	1.29	\$	49.19	\$	50.43	\$	51.68	\$	52.97	\$	54.30
087-050-067-000	1.75	\$	66.73	\$	68.41	\$	70.11	\$	71.86	\$	73.66
087-080-001-000	31.33	\$	1,194.61	\$	1,224.69	\$	1,255.08	\$	1,286.41	\$	1,318.68
087-080-002-000	25.33	\$	965.83	\$	990.15	\$	1,014.72	\$	1,040.05	\$	1,066.14
087-080-003-000	9.71	\$	370.24	\$	379.56	\$	388.98	\$	398.69	\$	408.69
087-080-005-000	8.12	\$	309.62	\$	317.41	\$	325.29	\$	333.41	\$	341.77
087-080-006-000	7.49	\$	285.59	\$	292.78	\$	300.05	\$	307.54	\$	315.25
087-080-007-000	8.71	\$	332.11	\$	340.47	\$	348.92	\$	357.63	\$	366.60
087-080-008-000	8.52	\$	324.87	\$	333.05	\$	341.31	\$	349.83	\$	358.61
087-080-009-000	15.7	\$	598.64	\$	613.71	\$	628.94	\$	644.64	\$	660.81
087-080-011-000	58	\$	2,211.54	\$	2,267.22	\$	2,323.48	\$	2,381.48	\$	2,441.22
087-090-004-000	4.58	\$	174.64	\$	179.03	\$	183.47	\$	188.05	\$	192.77
087-090-005-000	4.65	\$	177.30	\$	181.77	\$	186.28	\$	190.93	\$	195.72
087-090-006-000	8.08	\$	308.09	\$	315.85	\$	323.68	\$	331.76	\$	340.09
087-090-007-000	28.86	\$	1,100.43	\$	1,128.14	\$	1,156.13	\$	1,184.99	\$	1,214.72
087-090-013-000	13.49	\$	514.37	\$	527.32	\$	540.41	\$	553.90	\$	567.79
087-090-020-000	4.75	\$	181.12	\$	185.68	\$	190.29	\$	195.04	\$	199.93
087-090-021-000	9.3	\$	354.61	\$	363.54	\$	372.56	\$	381.86	\$	391.44
087-090-022-000	9.07	\$	345.84	\$	354.55	\$	363.34	\$	372.41	\$	381.76
087-090-023-000	8.49	\$	323.72	\$	331.87	\$	340.11	\$	348.60	\$	357.34
087-090-024-000	12.73	\$	485.39	\$	497.62	\$	509.96	\$	522.69	\$	535.81
087-090-025-000	7.27	\$	277.21	\$	284.18	\$	291.24	\$	298.51	\$	305.99
087-090-026-000	5	\$	190.65	\$	195.45	\$	200.30	\$	205.30	\$	210.45
087-090-036-000	2.74	\$	104.48	\$	107.11	\$	109.76	\$	112.50	\$	115.33
087-090-039-000	6.38	\$	243.27	\$	249.39	\$	255.58	\$	261.96	\$	268.53
087-090-043-000	3.64	\$	138.79	\$	142.29	\$	145.82	\$	149.46	\$	153.21
087-090-052-000	9.17	\$	349.65	\$	358.46	\$	367.35	\$	376.52	\$	385.97
087-090-053-000	10	\$	381.30	\$	390.90	\$	400.60	\$	410.60	\$	420.90
087-090-054-000	10	\$	381.30	\$	390.90	\$	400.60	\$	410.60	\$	420.90
087-090-055-000	15	\$	571.95	\$	586.35	\$	600.90	\$	615.90	\$	631.35
087-090-058-000	1.02	\$	38.89	\$	39.87	\$	40.86	\$	41.88	\$	42.93
087-090-059-000	1	\$	38.13	\$	39.09	\$	40.06	\$	41.06	\$	42.09
087-090-068-000	1.73	\$	65.96	\$	67.63	\$	69.30	\$	71.03	\$	72.82
087-090-070-000	6.94	\$	264.62	\$	271.28	\$	278.02	\$	284.96	\$	292.10
087-090-071-000	0.93	\$	35.46	\$	36.35	\$	37.26	\$	38.19	\$	39.14

087-090-072-000	1.72	\$	65.58	\$	67.23	\$	68.90	\$	70.62	\$	72.39
087-090-074-000	2.27	\$	86.56	\$	88.73	\$	90.94	\$	93.21	\$	95.54
087-100-003-000	4.92	\$	187.60	\$	192.32	\$	197.10	\$	202.02	\$	207.08
087-100-010-000	4.63	\$	176.54	\$	180.99	\$	185.48	\$	190.11	\$	194.88
087-100-014-000	2.67	\$	101.81	\$	104.37	\$	106.96	\$	109.63	\$	112.38
087-100-018-000	19.18	\$	731.33	\$	749.75	\$	768.35	\$	787.53	\$	807.29
087-100-020-000	2.44	\$	93.04	\$	95.38	\$	97.75	\$	100.19	\$	102.70
087-100-021-000	2.44	\$	93.04	\$	95.38	\$	97.75	\$	100.19	\$	102.70
087-100-022-000	2.5	\$	95.33	\$	97.73	\$	100.15	\$	102.65	\$	105.23
087-100-025-000	6.78	\$	258.52	\$	265.03	\$	271.61	\$	278.39	\$	285.37
087-100-026-000	9.51	\$	362.62	\$	371.75	\$	380.97	\$	390.48	\$	400.28
087-100-027-000	10.1	\$	385.11	\$	394.81	\$	404.61	\$	414.71	\$	425.11
087-100-031-000	4.72	\$	179.97	\$	184.50	\$	189.08	\$	193.80	\$	198.66
087-100-033-000	2.5	\$	95.33	\$	97.73	\$	100.15	\$	102.65	\$	105.23
087-100-034-000	8.55	\$	326.01	\$	334.22	\$	342.51	\$	351.06	\$	359.87
087-100-043-000	4.29	\$	163.58	\$	167.70	\$	171.86	\$	176.15	\$	180.57
087-100-045-000	8.47	\$	322.96	\$	331.09	\$	339.31	\$	347.78	\$	356.50
087-100-046-000	1.37	\$	52.24	\$	53.55	\$	54.88	\$	56.25	\$	57.66
087-100-047-000	8.29	\$	316.10	\$	324.06	\$	332.10	\$	340.39	\$	348.93
087-100-049-000	7.32	\$	279.11	\$	286.14	\$	293.24	\$	300.56	\$	308.10
087-100-050-000	4	\$	152.52	\$	156.36	\$	160.24	\$	164.24	\$	168.36
087-100-051-000	19.53	\$	744.68	\$	763.43	\$	782.37	\$	801.90	\$	822.02
087-100-052-000	10	\$	381.30	\$	390.90	\$	400.60	\$	410.60	\$	420.90
087-100-053-000	9.85	\$	375.58	\$	385.04	\$	394.59	\$	404.44	\$	414.59
087-100-054-000	4.93	\$	187.98	\$	192.71	\$	197.50	\$	202.43	\$	207.50
087-100-055-000	3.75	\$	142.99	\$	146.59	\$	150.23	\$	153.98	\$	157.84
087-100-056-000	1.95	\$	74.35	\$	76.23	\$	78.12	\$	80.07	\$	82.08
087-100-057-000	1.95	\$	74.35	\$	76.23	\$	78.12	\$	80.07	\$	82.08
087-100-058-000	1.95	\$	74.35	\$	76.23	\$	78.12	\$	80.07	\$	82.08
087-100-059-000	2.22	\$	84.65	\$	86.78	\$	88.93	\$	91.15	\$	93.44
087-100-063-000	7.42	\$	282.92	\$	290.05	\$	297.25	\$	304.67	\$	312.31
087-100-064-000	7.43	\$	283.31	\$	290.44	\$	297.65	\$	305.08	\$	312.73
087-100-067-000	4.82	\$	183.79	\$	188.41	\$	193.09	\$	197.91	\$	202.87
087-100-068-000	3.18	\$	121.25	\$	124.31	\$	127.39	\$	130.57	\$	133.85
087-100-073-000	11.07	\$	422.10	\$	432.73	\$	443.46	\$	454.53	\$	465.94
087-100-079-000	3.61	\$	137.65	\$	141.11	\$	144.62	\$	148.23	\$	151.94
087-100-080-000	3.61	\$	137.65	\$	141.11	\$	144.62	\$	148.23	\$	151.94
087-100-081-000	8.54	\$	325.63	\$	333.83	\$	342.11	\$	350.65	\$	359.45
087-100-086-000	5.03	\$	191.79	\$	196.62	\$	201.50	\$	206.53	\$	211.71
087-100-087-000	3.52	\$	134.22	\$	137.60	\$	141.01	\$	144.53	\$	148.16
087-130-019-000	79.98	\$	3,049.64	\$	3,126.42	\$	3,204.00	\$	3,283.98	\$	3,366.36
087-130-020-000	2.06	\$	78.55	\$	80.53	\$	82.52	\$	84.58	\$	86.71
087-130-021-000	18.56	\$	707.69	\$	725.51	\$	743.51	\$	762.07	\$	781.19
087-130-023-000	40.5	\$	1,544.27	\$	1,583.15	\$	1,622.43	\$	1,662.93	\$	1,704.65
087-140-003-000	1	\$	38.13	\$	39.09	\$	40.06	\$	41.06	\$	42.09

087-140-004-000	2.15	\$	81.98	\$	84.04	\$	86.13	\$	88.28	\$	90.49
087-140-005-000	4.44	\$	169.30	\$	173.56	\$	177.87	\$	182.31	\$	186.88
087-140-006-000	2.5	\$	95.33	\$	97.73	\$	100.15	\$	102.65	\$	105.23
087-140-007-000	2	\$	76.26	\$	78.18	\$	80.12	\$	82.12	\$	84.18
087-140-008-000	5	\$	190.65	\$	195.45	\$	200.30	\$	205.30	\$	210.45
087-140-009-000	9.67	\$	368.72	\$	378.00	\$	387.38	\$	397.05	\$	407.01
087-140-010-000	9.6	\$	366.05	\$	375.26	\$	384.58	\$	394.18	\$	404.06
087-140-016-000	4.68	\$	178.45	\$	182.94	\$	187.48	\$	192.16	\$	196.98
087-140-017-000	12.5	\$	476.63	\$	488.63	\$	500.75	\$	513.25	\$	526.13
087-140-019-000	4.87	\$	185.69	\$	190.37	\$	195.09	\$	199.96	\$	204.98
087-140-021-000	9.45	\$	360.33	\$	369.40	\$	378.57	\$	388.02	\$	397.75
087-140-027-000	6.59	\$	251.28	\$	257.60	\$	264.00	\$	270.59	\$	277.37
087-140-029-000	4.86	\$	185.31	\$	189.98	\$	194.69	\$	199.55	\$	204.56
087-140-030-000	7.04	\$	268.44	\$	275.19	\$	282.02	\$	289.06	\$	296.31
087-140-041-000	23.64	\$	901.39	\$	924.09	\$	947.02	\$	970.66	\$	995.01
087-140-042-000	2.65	\$	101.04	\$	103.59	\$	106.16	\$	108.81	\$	111.54
087-140-044-000	2.41	\$	91.89	\$	94.21	\$	96.54	\$	98.95	\$	101.44
087-140-045-000	2.41	\$	91.89	\$	94.21	\$	96.54	\$	98.95	\$	101.44
087-140-046-000	2.41	\$	91.89	\$	94.21	\$	96.54	\$	98.95	\$	101.44
087-140-047-000	2.41	\$	91.89	\$	94.21	\$	96.54	\$	98.95	\$	101.44
087-140-051-000	7.44	\$	283.69	\$	290.83	\$	298.05	\$	305.49	\$	313.15
087-140-052-000	7.47	\$	284.83	\$	292.00	\$	299.25	\$	306.72	\$	314.41
087-140-053-000	9.58	\$	365.29	\$	374.48	\$	383.77	\$	393.35	\$	403.22
087-140-054-000	4.55	\$	173.49	\$	177.86	\$	182.27	\$	186.82	\$	191.51
087-140-055-000	4.55	\$	173.49	\$	177.86	\$	182.27	\$	186.82	\$	191.51
087-150-002-000	14.7	\$	560.51	\$	574.62	\$	588.88	\$	603.58	\$	618.72
087-150-004-000	9.8	\$	373.67	\$	383.08	\$	392.59	\$	402.39	\$	412.48
087-150-005-000	7.5	\$	285.98	\$	293.18	\$	300.45	\$	307.95	\$	315.68
087-150-006-000	1	\$	38.13	\$	39.09	\$	40.06	\$	41.06	\$	42.09
087-150-008-000	9.29	\$	354.23	\$	363.15	\$	372.16	\$	381.45	\$	391.02
087-150-009-000	9.62	\$	366.81	\$	376.05	\$	385.38	\$	395.00	\$	404.91
087-150-010-000	4.91	\$	187.22	\$	191.93	\$	196.69	\$	201.60	\$	206.66
087-150-011-000	3.5	\$	133.46	\$	136.82	\$	140.21	\$	143.71	\$	147.32
087-150-012-000	9.29	\$	354.23	\$	363.15	\$	372.16	\$	381.45	\$	391.02
087-150-013-000	6.3	\$	240.22	\$	246.27	\$	252.38	\$	258.68	\$	265.17
087-150-016-000	9.62	\$	366.81	\$	376.05	\$	385.38	\$	395.00	\$	404.91
087-150-017-000	20	\$	762.60	\$	781.80	\$	801.20	\$	821.20	\$	841.80
087-150-018-000	10	\$	381.30	\$	390.90	\$	400.60	\$	410.60	\$	420.90
087-150-019-000	10	\$	381.30	\$	390.90	\$	400.60	\$	410.60	\$	420.90
087-150-020-000	4.7	\$	179.21	\$	183.72	\$	188.28	\$	192.98	\$	197.82
087-150-023-000	10	\$	381.30	\$	390.90	\$	400.60	\$	410.60	\$	420.90
087-150-024-000	14.7	\$	560.51	\$	574.62	\$	588.88	\$	603.58	\$	618.72
087-150-025-000	10	\$	381.30	\$	390.90	\$	400.60	\$	410.60	\$	420.90
087-150-026-000	5	\$	190.65	\$	195.45	\$	200.30	\$	205.30	\$	210.45
087-150-029-000	7.9	\$	301.23	\$	308.81	\$	316.47	\$	324.37	\$	332.51

087-150-032-000	14.55	\$	554.79	\$	568.76	\$	582.87	\$	597.42	\$	612.41
087-150-033-000	9.68	\$	369.10	\$	378.39	\$	387.78	\$	397.46	\$	407.43
087-150-036-000	0.44	\$	16.78	\$	17.20	\$	17.63	\$	18.07	\$	18.52
087-150-037-000	18	\$	686.34	\$	703.62	\$	721.08	\$	739.08	\$	757.62
087-150-038-000	10	\$	381.30	\$	390.90	\$	400.60	\$	410.60	\$	420.90
087-150-039-000	2.25	\$	85.79	\$	87.95	\$	90.14	\$	92.39	\$	94.70
087-150-040-000	9.4	\$	358.42	\$	367.45	\$	376.56	\$	385.96	\$	395.65
087-150-041-000	9.4	\$	358.42	\$	367.45	\$	376.56	\$	385.96	\$	395.65
087-180-004-000	9.5	\$	362.24	\$	371.36	\$	380.57	\$	390.07	\$	399.86
087-180-006-000	6.3	\$	240.22	\$	246.27	\$	252.38	\$	258.68	\$	265.17
087-180-007-000	16.5	\$	629.15	\$	644.99	\$	660.99	\$	677.49	\$	694.49
087-180-009-000	7.8	\$	297.41	\$	304.90	\$	312.47	\$	320.27	\$	328.30
087-180-010-000	17.98	\$	685.58	\$	702.84	\$	720.28	\$	738.26	\$	756.78
087-180-011-000	6.39	\$	243.65	\$	249.79	\$	255.98	\$	262.37	\$	268.96
087-180-014-000	8.44	\$	321.82	\$	329.92	\$	338.11	\$	346.55	\$	355.24
087-180-015-000	9.24	\$	352.32	\$	361.19	\$	370.15	\$	379.39	\$	388.91
087-180-019-000	6.56	\$	250.13	\$	256.43	\$	262.79	\$	269.35	\$	276.11
087-180-023-000	7	\$	266.91	\$	273.63	\$	280.42	\$	287.42	\$	294.63
087-180-027-000	6.7	\$	255.47	\$	261.90	\$	268.40	\$	275.10	\$	282.00
087-180-028-000	15.78	\$	601.69	\$	616.84	\$	632.15	\$	647.93	\$	664.18
087-180-030-000	1	\$	38.13	\$	39.09	\$	40.06	\$	41.06	\$	42.09
087-180-035-000	11.59	\$	441.93	\$	453.05	\$	464.30	\$	475.89	\$	487.82
087-180-036-000	2.74	\$	104.48	\$	107.11	\$	109.76	\$	112.50	\$	115.33
087-180-038-000	7.6	\$	289.79	\$	297.08	\$	304.46	\$	312.06	\$	319.88
087-180-039-000	9.7	\$	369.86	\$	379.17	\$	388.58	\$	398.28	\$	408.27
087-180-042-000	9.7	\$	369.86	\$	379.17	\$	388.58	\$	398.28	\$	408.27
087-180-043-000	9.28	\$	353.85	\$	362.76	\$	371.76	\$	381.04	\$	390.60
087-180-044-000	9.27	\$	353.47	\$	362.36	\$	371.36	\$	380.63	\$	390.17
087-180-047-000	9.67	\$	368.72	\$	378.00	\$	387.38	\$	397.05	\$	407.01
087-180-048-000	7.5	\$	285.98	\$	293.18	\$	300.45	\$	307.95	\$	315.68
087-180-049-000	7.92	\$	301.99	\$	309.59	\$	317.28	\$	325.20	\$	333.35
087-180-050-000	4.81	\$	183.41	\$	188.02	\$	192.69	\$	197.50	\$	202.45
087-180-055-000	8.5	\$	324.11	\$	332.27	\$	340.51	\$	349.01	\$	357.77
087-180-056-000	10	\$	381.30	\$	390.90	\$	400.60	\$	410.60	\$	420.90
087-180-057-000	2.19	\$	83.50	\$	85.61	\$	87.73	\$	89.92	\$	92.18
087-180-058-000	2.29	\$	87.32	\$	89.52	\$	91.74	\$	94.03	\$	96.39
087-190-002-000	9.26	\$	353.08	\$	361.97	\$	370.96	\$	380.22	\$	389.75
087-190-004-000	19.14	\$	729.81	\$	748.18	\$	766.75	\$	785.89	\$	805.60
087-190-005-000	9.8	\$	373.67	\$	383.08	\$	392.59	\$	402.39	\$	412.48
087-190-006-000	10	\$	381.30	\$	390.90	\$	400.60	\$	410.60	\$	420.90
087-190-007-000	35	\$	1,334.55	\$	1,368.15	\$	1,402.10	\$	1,437.10	\$	1,473.15
087-190-011-000	9.62	\$	366.81	\$	376.05	\$	385.38	\$	395.00	\$	404.91
087-190-012-000	9.25	\$	352.70	\$	361.58	\$	370.56	\$	379.81	\$	389.33
087-190-014-000	10	\$	381.30	\$	390.90	\$	400.60	\$	410.60	\$	420.90
087-190-015-000	10	\$	381.30	\$	390.90	\$	400.60	\$	410.60	\$	420.90

087-190-017-000	18.79	\$	716.46	\$	734.50	\$	752.73	\$	771.52	\$	790.87
087-190-019-000	4.91	\$	187.22	\$	191.93	\$	196.69	\$	201.60	\$	206.66
087-190-020-000	4.85	\$	184.93	\$	189.59	\$	194.29	\$	199.14	\$	204.14
087-190-021-000	8.75	\$	333.64	\$	342.04	\$	350.53	\$	359.28	\$	368.29
087-190-022-000	8.75	\$	333.64	\$	342.04	\$	350.53	\$	359.28	\$	368.29
087-190-023-000	8.75	\$	333.64	\$	342.04	\$	350.53	\$	359.28	\$	368.29
087-190-024-000	8.75	\$	333.64	\$	342.04	\$	350.53	\$	359.28	\$	368.29
087-190-027-000	10.8	\$	411.80	\$	422.17	\$	432.65	\$	443.45	\$	454.57
087-190-028-000	11.36	\$	433.16	\$	444.06	\$	455.08	\$	466.44	\$	478.14
087-190-029-000	8.68	\$	330.97	\$	339.30	\$	347.72	\$	356.40	\$	365.34
087-190-030-000	0.42	\$	16.01	\$	16.42	\$	16.83	\$	17.25	\$	17.68
087-190-031-000	9.14	\$	348.51	\$	357.28	\$	366.15	\$	375.29	\$	384.70
087-190-033-000	9	\$	343.17	\$	351.81	\$	360.54	\$	369.54	\$	378.81
087-190-034-000	9	\$	343.17	\$	351.81	\$	360.54	\$	369.54	\$	378.81
087-190-035-000	2	\$	76.26	\$	78.18	\$	80.12	\$	82.12	\$	84.18
087-190-036-000	2	\$	76.26	\$	78.18	\$	80.12	\$	82.12	\$	84.18
087-190-037-000	2	\$	76.26	\$	78.18	\$	80.12	\$	82.12	\$	84.18
087-190-038-000	2.92	\$	111.34	\$	114.14	\$	116.98	\$	119.90	\$	122.90
087-210-007-000	67.55	\$	2,575.68	\$	2,640.53	\$	2,706.05	\$	2,773.60	\$	2,843.18
087-210-009-000	40	\$	1,525.20	\$	1,563.60	\$	1,602.40	\$	1,642.40	\$	1,683.60
087-210-016-000	55.2	\$	2,104.78	\$	2,157.77	\$	2,211.31	\$	2,266.51	\$	2,323.37
087-210-017-000	4.2	\$	160.15	\$	164.18	\$	168.25	\$	172.45	\$	176.78
087-210-018-000	0.6	\$	22.88	\$	23.45	\$	24.04	\$	24.64	\$	25.25
087-210-021-000	42.31	\$	1,613.28	\$	1,653.90	\$	1,694.94	\$	1,737.25	\$	1,780.83
087-210-022-000	2.9	\$	110.58	\$	113.36	\$	116.17	\$	119.07	\$	122.06
087-210-023-000	12.75	\$	486.16	\$	498.40	\$	510.77	\$	523.52	\$	536.65
087-220-001-000	27.78	\$	1,059.25	\$	1,085.92	\$	1,112.87	\$	1,140.65	\$	1,169.26
087-220-002-000	16.12	\$	614.66	\$	630.13	\$	645.77	\$	661.89	\$	678.49
087-220-017-000	14	\$	533.82	\$	547.26	\$	560.84	\$	574.84	\$	589.26
087-230-004-000	3.36	\$	128.12	\$	131.34	\$	134.60	\$	137.96	\$	141.42
087-230-008-000	5.1	\$	194.46	\$	199.36	\$	204.31	\$	209.41	\$	214.66
087-230-011-000	2	\$	76.26	\$	78.18	\$	80.12	\$	82.12	\$	84.18
087-230-012-000	7.5	\$	285.98	\$	293.18	\$	300.45	\$	307.95	\$	315.68
087-230-013-000	2.48	\$	94.56	\$	96.94	\$	99.35	\$	101.83	\$	104.38
087-230-014-000	4.59	\$	175.02	\$	179.42	\$	183.88	\$	188.47	\$	193.19
087-230-015-000	15.87	\$	605.12	\$	620.36	\$	635.75	\$	651.62	\$	667.97
087-230-023-000	1.35	\$	51.48	\$	52.77	\$	54.08	\$	55.43	\$	56.82
087-230-026-000	7.59	\$	289.41	\$	296.69	\$	304.06	\$	311.65	\$	319.46
087-230-027-000	6.86	\$	261.57	\$	268.16	\$	274.81	\$	281.67	\$	288.74
087-230-028-000	8.46	\$	322.58	\$	330.70	\$	338.91	\$	347.37	\$	356.08
087-230-031-000	3.17	\$	120.87	\$	123.92	\$	126.99	\$	130.16	\$	133.43
087-230-032-000	4.84	\$	184.55	\$	189.20	\$	193.89	\$	198.73	\$	203.72
087-230-040-000	2	\$	76.26	\$	78.18	\$	80.12	\$	82.12	\$	84.18
087-230-041-000	9.6	\$	366.05	\$	375.26	\$	384.58	\$	394.18	\$	404.06
087-230-042-000	5	\$	190.65	\$	195.45	\$	200.30	\$	205.30	\$	210.45

087-230-043-000	1	\$	38.13	\$	39.09	\$	40.06	\$	41.06	\$	42.09
087-240-001-000	4.83	\$	184.17	\$	188.80	\$	193.49	\$	198.32	\$	203.29
087-240-003-000	7.62	\$	290.55	\$	297.87	\$	305.26	\$	312.88	\$	320.73
087-240-004-000	9.75	\$	371.77	\$	381.13	\$	390.59	\$	400.34	\$	410.38
087-240-005-000	9.7	\$	369.86	\$	379.17	\$	388.58	\$	398.28	\$	408.27
087-240-012-000	9	\$	343.17	\$	351.81	\$	360.54	\$	369.54	\$	378.81
087-240-013-000	6.83	\$	260.43	\$	266.98	\$	273.61	\$	280.44	\$	287.47
087-240-017-000	3.27	\$	124.69	\$	127.82	\$	131.00	\$	134.27	\$	137.63
087-240-018-000	7.34	\$	279.87	\$	286.92	\$	294.04	\$	301.38	\$	308.94
087-240-021-000	53	\$	2,020.89	\$	2,071.77	\$	2,123.18	\$	2,176.18	\$	2,230.77
087-240-023-000	8.39	\$	319.91	\$	327.97	\$	336.10	\$	344.49	\$	353.14
087-240-025-000	10.68	\$	407.23	\$	417.48	\$	427.84	\$	438.52	\$	449.52
087-240-026-000	9.28	\$	353.85	\$	362.76	\$	371.76	\$	381.04	\$	390.60
087-240-027-000	9.27	\$	353.47	\$	362.36	\$	371.36	\$	380.63	\$	390.17
087-240-028-000	18.5	\$	705.41	\$	723.17	\$	741.11	\$	759.61	\$	778.67
087-240-029-000	9.25	\$	352.70	\$	361.58	\$	370.56	\$	379.81	\$	389.33
087-240-035-000	8.3	\$	316.48	\$	324.45	\$	332.50	\$	340.80	\$	349.35
087-240-036-000	8.3	\$	316.48	\$	324.45	\$	332.50	\$	340.80	\$	349.35
087-240-039-000	2.79	\$	106.38	\$	109.06	\$	111.77	\$	114.56	\$	117.43
087-240-040-000	9.45	\$	360.33	\$	369.40	\$	378.57	\$	388.02	\$	397.75
087-240-041-000	9.45	\$	360.33	\$	369.40	\$	378.57	\$	388.02	\$	397.75
087-240-042-000	9.44	\$	359.95	\$	369.01	\$	378.17	\$	387.61	\$	397.33
087-250-018-000	5.77	\$	220.01	\$	225.55	\$	231.15	\$	236.92	\$	242.86
087-280-025-000	18	\$	686.34	\$	703.62	\$	721.08	\$	739.08	\$	757.62
087-280-032-000	51.33	\$	1,957.21	\$	2,006.49	\$	2,056.28	\$	2,107.61	\$	2,160.48
087-280-033-000	34.04	\$	1,297.95	\$	1,330.62	\$	1,363.64	\$	1,397.68	\$	1,432.74
087-290-006-000	5	\$	190.65	\$	195.45	\$	200.30	\$	205.30	\$	210.45
087-290-007-000	4.7	\$	179.21	\$	183.72	\$	188.28	\$	192.98	\$	197.82
087-290-012-000	10	\$	381.30	\$	390.90	\$	400.60	\$	410.60	\$	420.90
087-290-013-000	18.97	\$	723.33	\$	741.54	\$	759.94	\$	778.91	\$	798.45
087-290-014-000	11	\$	419.43	\$	429.99	\$	440.66	\$	451.66	\$	462.99
087-290-015-000	3.55	\$	135.36	\$	138.77	\$	142.21	\$	145.76	\$	149.42
087-290-025-000	10	\$	381.30	\$	390.90	\$	400.60	\$	410.60	\$	420.90
087-290-026-000	10	\$	381.30	\$	390.90	\$	400.60	\$	410.60	\$	420.90
087-290-031-000	8.6	\$	327.92	\$	336.17	\$	344.52	\$	353.12	\$	361.97
087-290-032-000	20	\$	762.60	\$	781.80	\$	801.20	\$	821.20	\$	841.80
087-290-036-000	4.71	\$	179.59	\$	184.11	\$	188.68	\$	193.39	\$	198.24
087-290-037-000	19.49	\$	743.15	\$	761.86	\$	780.77	\$	800.26	\$	820.33
087-290-039-000	4.92	\$	187.60	\$	192.32	\$	197.10	\$	202.02	\$	207.08
087-290-041-000	4.92	\$	187.60	\$	192.32	\$	197.10	\$	202.02	\$	207.08
087-290-044-000	5.05	\$	192.56	\$	197.40	\$	202.30	\$	207.35	\$	212.55
087-290-046-000	9.08	\$	346.22	\$	354.94	\$	363.74	\$	372.82	\$	382.18
087-290-047-000	20	\$	762.60	\$	781.80	\$	801.20	\$	821.20	\$	841.80
087-290-048-000	1.26	\$	48.04	\$	49.25	\$	50.48	\$	51.74	\$	53.03
087-290-049-000	9	\$	343.17	\$	351.81	\$	360.54	\$	369.54	\$	378.81

087-290-050-000	1.9	\$	72.45	\$	74.27	\$	76.11	\$	78.01	\$	79.97
087-290-051-000	7	\$	266.91	\$	273.63	\$	280.42	\$	287.42	\$	294.63
087-290-052-000	5.05	\$	192.56	\$	197.40	\$	202.30	\$	207.35	\$	212.55
087-330-004-000	10	\$	381.30	\$	390.90	\$	400.60	\$	410.60	\$	420.90
087-330-005-000	19.62	\$	748.11	\$	766.95	\$	785.98	\$	805.60	\$	825.81
087-330-007-000	19.63	\$	748.49	\$	767.34	\$	786.38	\$	806.01	\$	826.23
087-330-008-000	19.62	\$	748.11	\$	766.95	\$	785.98	\$	805.60	\$	825.81
087-330-009-000	19.62	\$	748.11	\$	766.95	\$	785.98	\$	805.60	\$	825.81
087-330-010-000	10.13	\$	386.26	\$	395.98	\$	405.81	\$	415.94	\$	426.37
087-330-012-000	9.98	\$	380.54	\$	390.12	\$	399.80	\$	409.78	\$	420.06
087-330-014-000	9.94	\$	379.01	\$	388.55	\$	398.20	\$	408.14	\$	418.37
087-330-016-000	9.97	\$	380.16	\$	389.73	\$	399.40	\$	409.37	\$	419.64
087-330-017-000	9.98	\$	380.54	\$	390.12	\$	399.80	\$	409.78	\$	420.06